

# **Blasius Pöll**

**(1856 - 1919)**

Königlicher Musikmeister,

letzter Kapellmeister

des

16. Infanterieregiments in Passau

## **Ein Hoch den Damen (Marsch)**

**für**

**Kleine Blasmusik**

Bearbeitung:

Josef Wimmer

<b>Titel:</b>	<b>Ein Hoch den Damen (Marsch)</b>
<b>Quelle:</b>	<b>Archiv des Konzertvereines Passau</b>
<b>Komponist:</b>	<b>Blasius Pöll (1856-1919)</b>
<b>Arrangeur/ Bearbeiter:</b>	<b>Josef Wimmer</b>
<b>Besetzung:</b>	<b>Kleine Blasmusik</b>

<b>X</b>	Direktion	<b>X</b>	1. Horn in Es		Pauken
	Piccolo in C	<b>X</b>	2. Horn in Es	<b>X</b>	kleine Trommel
<b>X</b>	Flöte in C	<b>X</b>	3. Horn in Es	<b>X</b>	große Trommel
	2. Flöte in C/Piccolo		4. Horn in Es	<b>X</b>	Schlagzeug
	Oboe	<b>X</b>	1. Horn in F		Lyra
	2. Oboe	<b>X</b>	2. Horn in F		Glockenspiel
	Fagott	<b>X</b>	3. Horn in F		Xylophon
	2. Fagott		4. Horn in F	<b>X</b>	Akkordeon
	Kontrafagott	<b>X</b>	1. Tenorhorn in B		Bandoneon
<b>X</b>	1. Klarinette in Es		2. Tenorhorn in B (Mel.)		Harmonium
	Klarinette hoch in B	<b>X</b>	2. Tenorhorn in B		
<b>X</b>	2. Klarinette in B (2. St.)	<b>X</b>	3. Tenorhorn in B		1. Nachschlaggeige
<b>X</b>	3. Klarinette in B (3. St.)	<b>X</b>	4. Tenorhorn in B		2. Nachschlaggeige
<b>X</b>	3. Klarinette in B (1. St.)		Tenorhorn ad lib		Nachschlagbratsche
	Bassklarinetten	<b>X</b>	Bariton in C		1. Violine (obligat)
	Sopransaxophon	<b>X</b>	Bariton in B		1. Violine
	1. Altsaxophon in Es		Bariton (Tanzmusi)		2. Violine
	2. Altsaxophon in Es		Bariton in C (Melodie)		3. Violine
	Tenorsaxophon in B		Bariton in B (Melodie)		Bratsche
	2. Tenorsaxophon in B		1. Basstrompete in B		Cello
	Baritonsaxophon in Es		2. Basstrompete in B		Kontrabass
	Harfe		1. Basstrompete in C		1. Stimme
	Klavier		2. Basstrompete in C		2. Stimme
<b>X</b>	1. Flügelhorn in B	<b>X</b>	1. Posaune in C		3. Stimme
<b>X</b>	2. Flügelhorn in B	<b>X</b>	2. Posaune in C		4. Stimme
	3. Flügelhorn in B	<b>X</b>	3. Posaune in C		Nebenstimme
	Flügelhorn in		4. Posaune in C		Gitarre
	Flügelhorn in		1. Posaune in B		Sopranino
<b>X</b>	Trompete in B (3. St.)		2. Posaune in B		Sopranblockflöte
	2. Trompete in B		3. Posaune in B		Altblockflöte
	3. Trompete in B		4. Posaune in B		Tenorblockflöte
	4. Trompete in B	<b>X</b>	1. Tuba in C		Bassblockflöte
<b>X</b>	1. Begleittrompete in B	<b>X</b>	2. Tuba in C		
<b>X</b>	2. Begleittrompete in B		1. Tuba in B		Textblatt
	1. Trompete in		2. Tuba in B		Liedblatt
	2. Trompete in	<b>X</b>	Tuba in B		
	1. Trompete in Es		Tuba in F	<b>X</b>	Begleitung in C
	2. Trompete in Es		Tuba in Es		
	3. Trompete in Es				
	4. Trompete in Es				

# Spielhinweise für die Notenausgaben

1. Es ergibt sich folgende Stimmverteilung:

## a) Melodiestimmen

- |            |   |
|------------|---|
| 1. Stimme: | 1. Klarinette in Es (oktavierend)<br>3. Klarinette in B (Melodie)<br>Flöte in C (wie Es-Klarinette)<br>1. Flügelhorn in B |
| 2. Stimme: | 2. Klarinette in B (oktavierend)<br>2. Flügelhorn in B  |
| 3. Stimme: | 3. Klarinette in B (oktavierend)<br>Trompete in B   |

Hinweis: Der Holzsatz kann auch zweistimmig gespielt werden (z.B. 1. Kla-Es und 2. Kla B). Wenn zwei b-Klarinetten besetzt sind kann entweder die 2. Kla-B oder die 3. Kla-B (Melodie) gespielt werden, je nach „harmonischen“ Geschmack. Die Trompetenstimme (3. Stimme) muss nicht besetzt sein.

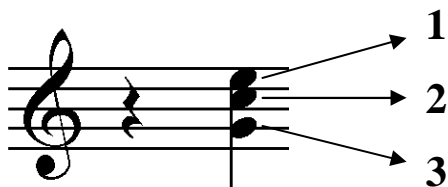
- Nebenstimmen: 1. Tenorhorn in B  
Bariton in B, Bariton in C

Falls nur eine Nebenstimme vorhanden ist, nur das 1. Tenorhorn in B verwenden.

## b) Begleitstimmen

Vorschlag: 1./2. Bass und Kontrabass in C, Tuba in B

Nachschlag:



- 1:** 1. Begleittrumpete in B = 2. Tenorhorn in B = 1. Horn in Es/F = 1. Posaune in C  
**2:** 2. Begleittrumpete in B = 3. Tenorhorn in B = 2. Horn in Es/F = 2. Posaune in C  
**3:** 4. Tenorhorn in B = 3. Horn in Es/F = 3. Posaune in C

Begleitung mit Akkordeon: Begleitung in C mit Akkorden (bei einem „B“-Akkord ist ein „H“-Akkord zu spielen; „Bb“-Akkord ein „B“)

Es können jederzeit die verschiedenen Nachschlaginstrumente kombiniert werden

Schlagzeug ad lib.

## c) Kombination von Kleiner und Großer (sinfonischer) Blasmusik

Zuerst soll die Besetzung der Kleinen Blasmusik erfüllt sein, z. B. zweistimmige Melodie, dreistimmiger Nachschlag, bevor auf Stimmen der Großen Blasmusik zurückgegriffen wird.

Josef Wimmer

# Partitur in C

## Ein Hoch den Damen (Marsch)

Musik: Blasius Pöll (1856-1919)  
Bearb. Josef Wimmer

**A**

Holz

Flügelhorn in B  
1/2

Trompete in B  
(meist 3. Stimme)

Tenorhorn 1 in B  
Bariton

Nachschlag  
Tuba

Schlagzeug

*f* *p* *f* *p*

B $\flat$  F7 B $\flat$  B $\flat$

Holz

Flhn.  
1/2

Trp.  
3. St.

Tenh.  
Bar.

Nach.  
Bass

Schlagz.

*mf* *p* *mf* *p* *mf* *p*

F7 E $\flat$  B $\flat$  F7 B $\flat$

Partitur in C

13

Holz

Flhn. 1/2

Trp. 3. St.

Tenh. Bar.

Nach. Bass

Schlgz.

*p* *f*

B $\flat$  F $^7$  E $\flat$  B $\flat$  F

Detailed description: This block contains the musical score for measures 13 through 17. It features six staves: Holz (Woodwinds), Flhn. 1/2 (Flute), Trp. 3. St. (Trumpet), Tenh. Bar. (Tenor Saxophone), Nach. Bass (Double Bass), and Schlgz. (Drum Set). The key signature has two flats (B-flat and E-flat). Measure 13 starts with a woodwind entry marked *p*. The flute and saxophone parts have a '7' above them, indicating a seventh. The bass line consists of chords and single notes. The drum set part has a consistent pattern. Dynamics range from *p* to *f*. Chord symbols B $\flat$ , F $^7$ , E $\flat$ , B $\flat$ , and F are placed above the bass staff.

18

1. 2.

Holz

Flhn. 1/2

Trp. 3. St.

Tenh. Bar.

Nach. Bass

Schlgz.

*p* *f*

G $m$  F C $^7$  F F

Detailed description: This block contains the musical score for measures 18 through 22. It features the same six staves as the previous block. Measure 18 begins with a woodwind entry marked *p*. The flute and saxophone parts have a '7' above them. The bass line consists of chords and single notes. The drum set part has a consistent pattern. Dynamics range from *p* to *f*. Chord symbols G $m$ , F, C $^7$ , F, and F are placed above the bass staff. A first and second ending bracket spans measures 19-20 and 21-22 respectively.

22 **B**

Holz

Flh. 1/2

Trp. 3. St.

Tenh. Bar.

Nach. Bass

Schlagz.

*f* *p* *mf*

tacet

F7 Bb F7

28

Holz

Flh. 1/2

Trp. 3. St.

Tenh. Bar.

Nach. Bass

Schlagz.

*f*

spielen

Bb F7

32

Holz

Flh. 1/2

Trp. 3. St.

Tenh. Bar.

Nach. Bass

Schlagz.

*f*

*f*

*f*

*f*

B $\flat$  Eb B $\flat$  G $\flat$ 7 B $\flat$  F7 B $\flat$  B $\flat$

1. 2.

**Trio**

39

Holz

Flh. 1/2

Trp. 3. St.

Tenh. Bar.

Nach. Bass

Schlagz.

*f* *p* *f* *p*

tacet

tacet

*f* *p*

E $\flat$  E $\flat$

*f*

**Trio**

**C**

45

Holz

Flhn. 1/2

Trp. 3. St.

Tenh. Bar.

Nach. Bass

Schlgz.

51

Holz

Tutti

Flhn. 1/2

Tutti

Trp. 3. St.

Tenh. Bar.

Nach. Bass

Schlgz.

E $\flat$

B $\flat$ 7

E $\flat$



57

Holz

Flhn. 1/2

Trp. 3. St.

Tenh. Bar.

Nach. Bass

Schlgz.

E<sub>b</sub>

63

Holz

Flhn. 1/2

Trp. 3. St.

Tenh. Bar.

Nach. Bass

Schlgz.

B<sub>b</sub>

F<sup>7</sup>

67

Holz

Flh. 1/2

Trp. 3. St.

Tenh. Bar.

Nach. Bass

Schlz.

B $\flat$  Cm F $^7$  B $\flat$

P

1. Flü.

P

73 **D**

Holz

Flh. 1/2

Trp. 3. St.

Tenh. Bar.

Nach. Bass

Schlz.

nur Bariton

p

E $\flat$  B $\flat$  $^7$

Triangel

p

Partitur in C

79

Holz

Flhn. 1/2

Trp. 3. St.

Tenh. Bar.

Nach. Bass

Schlagz.

E $\flat$

Fm

**DD**

85

Holz

Flhn. 1/2

Trp. 3. St.

Tenh. Bar.

Nach. Bass

Schlagz.

beide

beide

B $\flat$ 7

E $\flat$

E $\flat$

kl. Tr.

f

p

f

f

91

Holz

Flhn. 1/2

Trp. 3. St.

Tenh. Bar.

Nach. Bass

Schlgz.

B $\flat$ 7

E $\flat$

Detailed description: This system contains five measures of music. The woodwinds (Horn, Flute 1/2) play chords with some melodic movement. The trumpet (3rd staff) has a melodic line with a dotted quarter note. The trombone (Tenor) has a simple melodic line. The bass (Nachbass) and drums (Schlagzeug) provide a steady accompaniment. Chord changes to B $\flat$ 7 and E $\flat$  are indicated in the bass staff.

96

Holz

Flhn. 1/2

Trp. 3. St.

Tenh. Bar.

Nach. Bass

Schlgz.

Fm

Detailed description: This system contains five measures of music. The instrumentation remains the same. The woodwinds continue with their parts. The trumpet and trombone have more active melodic lines. The bass and drums maintain the rhythmic foundation. A chord change to Fm is indicated in the bass staff.

100

Holz

Flh. 1/2

Trp. 3. St.

Tenh. Bar.

Nach. Bass

Schlagz.

Bb<sup>7</sup>

E<sub>b</sub>

Detailed description: This is a page of a musical score for a band, numbered 100. The score is in C major and consists of six staves. The instruments are Holz (Woodwinds), Flh. 1/2 (Flute 1/2), Trp. 3. St. (Trumpet 3rd Staff), Tenh. Bar. (Tenor Baritone), Nach. Bass (Nachbass), and Schlagz. (Schlagzeug/Drums). The Holz staff has a melodic line with a slur over the first two measures. The Flh. 1/2 staff has a similar melodic line. The Trp. 3. St. staff has a melodic line with a slur over the first two measures. The Tenh. Bar. staff has a melodic line with a slur over the first two measures. The Nach. Bass staff has a bass line with a slur over the first two measures and a change in harmony from Bb7 to Eb in the third measure. The Schlagz. staff has a drum line with a slur over the first two measures. The score is in C major and consists of six staves. The instruments are Holz (Woodwinds), Flh. 1/2 (Flute 1/2), Trp. 3. St. (Trumpet 3rd Staff), Tenh. Bar. (Tenor Baritone), Nach. Bass (Nachbass), and Schlagz. (Schlagzeug/Drums). The Holz staff has a melodic line with a slur over the first two measures. The Flh. 1/2 staff has a similar melodic line. The Trp. 3. St. staff has a melodic line with a slur over the first two measures. The Tenh. Bar. staff has a melodic line with a slur over the first two measures. The Nach. Bass staff has a bass line with a slur over the first two measures and a change in harmony from Bb7 to Eb in the third measure. The Schlagz. staff has a drum line with a slur over the first two measures.