

Titel:	Landauer Zwiefacher (Bayerischer Bauer)
Quellen:	In ganz Niederbayern verbreitet, z. B. Notenbuch des Hans Zettl (Pilsting) oder Nachlass von Alois Schätz, Mamming
Komponist:	Volksgut
Arrangeur/ Bearbeiter:	Josef Wimmer
Besetzung:	Blechbläserquintett

Besetzungsliste:

A	Flügelhorn/Trompete in B	Trompete in C
B	Flügelhorn/Trompete in B	Trompete in C
C	Posaune/Bariton in C	Horn in F, Horn in Es Tenorhorn/Posaune in B
D	Posaune/Bariton in C	Horn in F, Horn in Es Tenorhorn/Posaune in B
E	Tuba (tief) in C	Tuba (hoch) in C, Kontrabass, Tuba in B
	Begleitung in C (ad lib.)	Akkordeon, Orgel, Gitarre usw.
	Schlagzeug (ad lib.)	



Josef Wimmer im Mai 2020

Landauer-Zwiefacher (Bayerischer Bauer)

Volksgut
Bearb. Josef Wimmer

♩ im 3/4 Takt = ♩ im 2/4 Takt

A

Musical score for the first system (measures 1-6). The score is for six parts: A) Trompete in B, B) Trompete in B, C) Posaune in C, D) Posaune in C, E) Tuba in C/Kontrabass, and Schlagzeug (ad lib.). The key signature is two flats (B-flat and E-flat). The time signature is 3/4, which changes to 2/4 at the beginning of measures 2, 4, and 6. The music features a mix of eighth and quarter notes, with rests in the tuba and drum parts.

Musical score for the second system (measures 7-12). The score is for six parts: A) Trp., B) Trp., C) Pos., D) Pos., E) Tuba, and Schlagz. The key signature is two flats. The time signature is 2/4, which changes to 3/4 at the beginning of measures 8, 10, and 12. The music continues with eighth and quarter notes, and rests in the tuba and drum parts.

14

A) Trp.

B) Trp.

C) Pos.

D) Pos.

E) Tuba

Schlgz.

AA

20

A) Trp.

B) Trp.

C) Pos.

D) Pos.

E) Tuba

Schlgz.

27

A) Trp.

B) Trp.

C) Pos.

D) Pos.

E) Tuba

Schlagz.

33

A) Trp.

B) Trp.

C) Pos.

D) Pos.

E) Tuba

Schlagz.

39 **B**

A) Trp.
B) Trp.
C) Pos.
D) Pos.
E) Tuba
Schlgz.

This musical score block covers measures 39 to 46. It features six staves: A) Trp., B) Trp., C) Pos., D) Pos., E) Tuba, and Schlgz. The key signature is three flats (B-flat, E-flat, A-flat). The time signature changes from 3/4 to 2/4 and back to 3/4. A section marker 'B' is placed above measure 39. The percussion part (Schlgz.) consists of a steady eighth-note pattern.

47

A) Trp.
B) Trp.
C) Pos.
D) Pos.
E) Tuba
Schlgz.

This musical score block covers measures 47 to 54. It features the same six staves as the previous block. The key signature remains three flats. The time signature continues to alternate between 3/4 and 2/4. The brass parts (A) Trp., B) Trp., C) Pos., and D) Pos. have more active melodic lines, while E) Tuba and Schlgz. maintain their rhythmic patterns.

53

A) Trp.
B) Trp.
C) Pos.
D) Pos.
E) Tuba
Schlgz.

This musical score covers measures 53 to 57. It features six staves: A) Trp., B) Trp., C) Pos., D) Pos., E) Tuba, and Schlgz. The key signature is three flats (B-flat, E-flat, A-flat). The time signature changes from 3/4 to 2/4 at measure 54, back to 3/4 at measure 55, and finally to 2/4 at measure 57. The percussion part (Schlgz.) consists of a steady rhythmic pattern of eighth notes.

58

BB

A) Trp.
B) Trp.
C) Pos.
D) Pos.
E) Tuba
Schlgz.

This musical score covers measures 58 to 62. It features the same six staves as the previous section. A box labeled "BB" is positioned above measure 58. The key signature remains three flats. The time signature changes from 3/4 to 2/4 at measure 59, back to 3/4 at measure 60, and finally to 2/4 at measure 62. The A) Trp. part is mostly silent, while the other instruments play rhythmic patterns.

64

A) Trp.
B) Trp.
C) Pos.
D) Pos.
E) Tuba
Schlgz.

This musical score covers measures 64 through 69. It features six staves: A) Trp. (Trumpet), B) Trp. (Trumpet), C) Pos. (Posaune), D) Pos. (Posaune), E) Tuba (Tuba), and Schlgz. (Schlagzeug/Drum). The key signature is three flats (B-flat, E-flat, A-flat). The time signature changes from 2/4 to 3/4 and back to 2/4. The percussion part (Schlgz.) is marked with a double bar line and a drum symbol (H) at the beginning of each measure.

70

A) Trp.
B) Trp.
C) Pos.
D) Pos.
E) Tuba
Schlgz.

This musical score covers measures 70 through 75. It features the same six staves as the previous system. The key signature remains three flats. The time signature continues to alternate between 2/4 and 3/4. The percussion part (Schlgz.) continues with the same drum notation.

Landauer-Zweifacher

(Bayerischer Bauer)

Volksgut

Bearb. Josef Wimmer

A) Trompete in C

♩ im 3/4 Takt = ♩ im 2/4 Takt

A

8

18

AA

25

33

39

B

46

53

BB

2

2

62

2

70

A) Trompete in B

Landauer-Zwiefacher (Bayerischer Bauer)

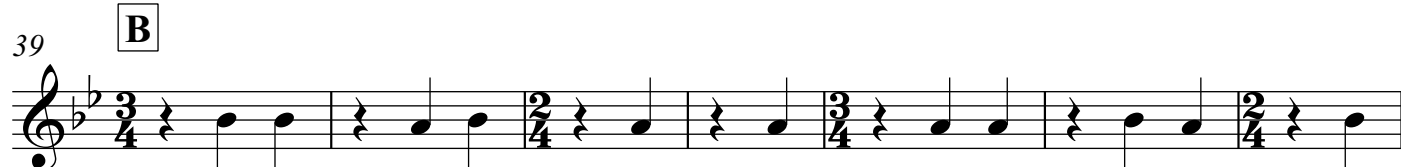
Volksgut
Bearb. Josef Wimmer

♩ im 3/4 Takt = ♩ im 2/4 Takt

A



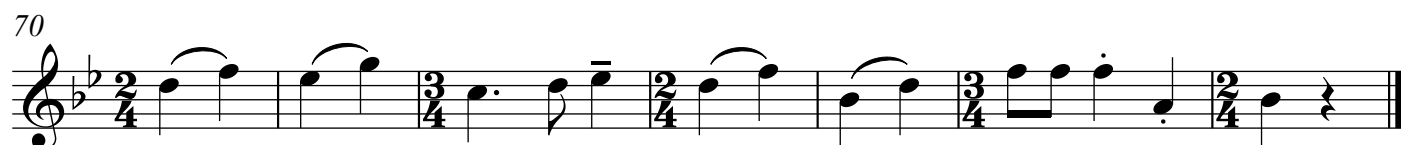
AA



B



BB



B) Trompete in C Landauer-Zwiefacher
(Bayerischer Bauer)

Volksgut
Bearb. Josef Wimmer

♩ im 3/4 Takt = ♩ im 2/4 Takt

A



8



18

AA



25



33



39 B



46



53 BB



62



70

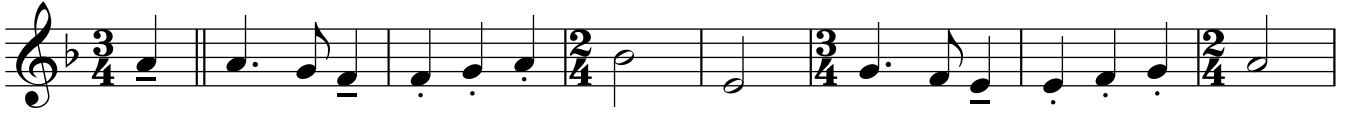


B) Trompete in B Landauer-Zwiefacher (Bayerischer Bauer)

Volksgut
Bearb. Josef Wimmer

♩ im 3/4 Takt = ♩ im 2/4 Takt

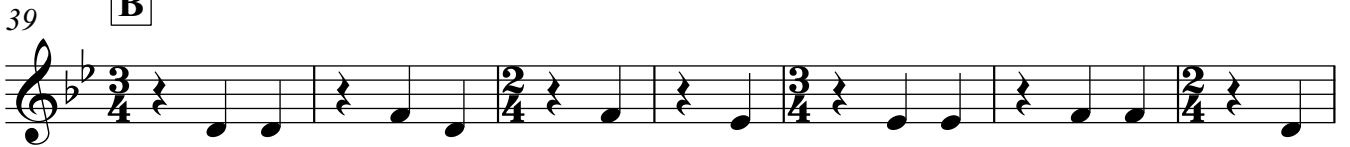
A



AA



B



BB



C) Horn in F

Landauer-Zwiefacher

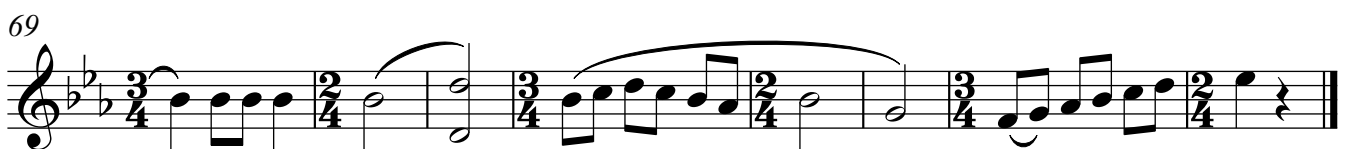
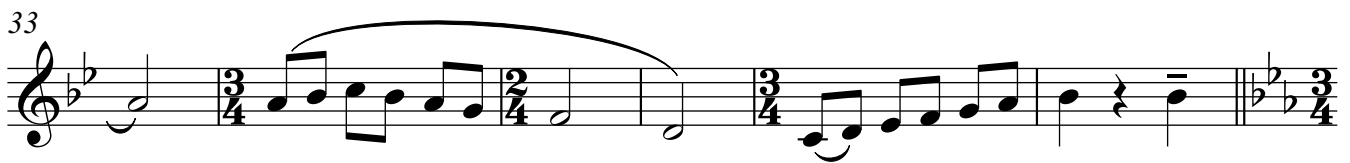
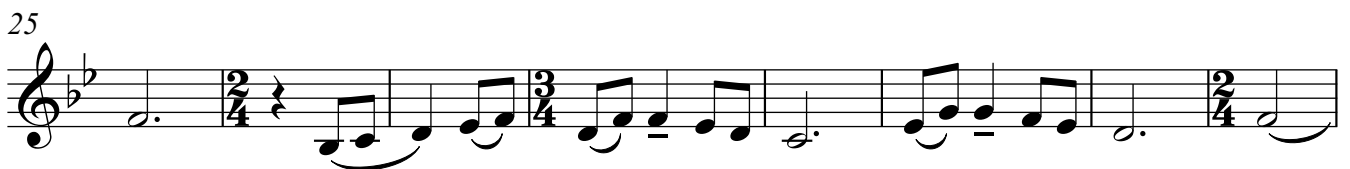
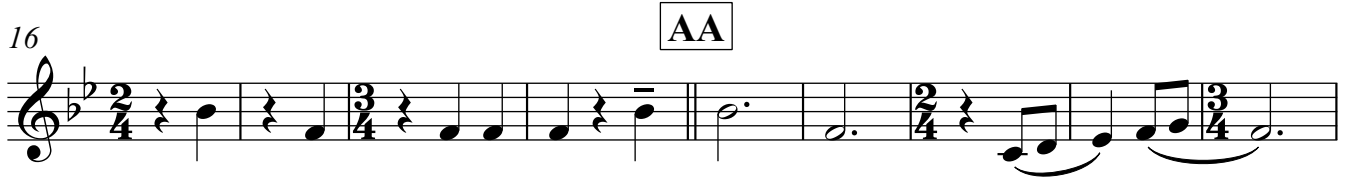
Volksgut

♩ im 3/4 Takt = ♩ im 2/4 Takt

(Bayerischer Bauer)

Bearb. Josef Wimmer

A



C) Horn in Es

Landauer-Zwiefacher

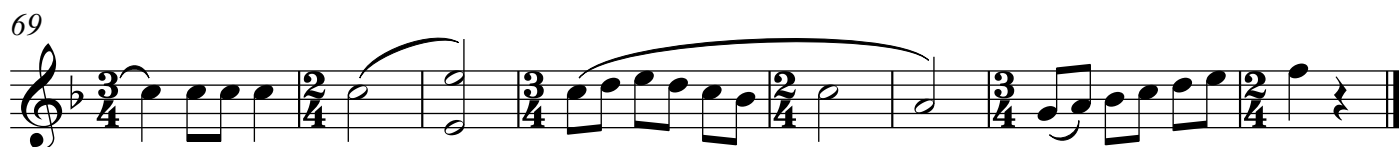
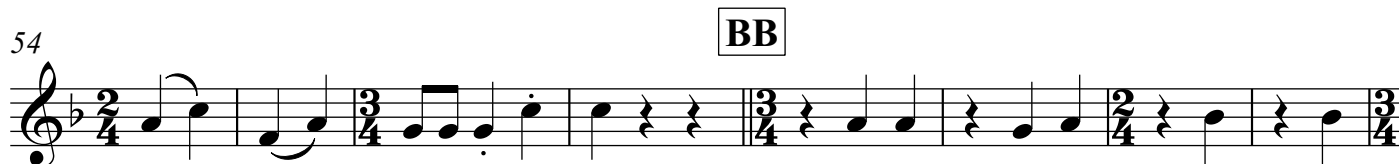
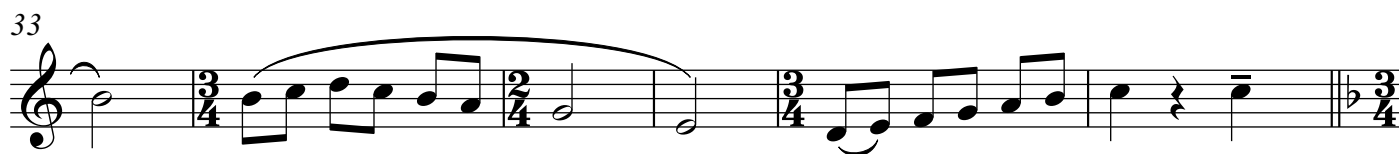
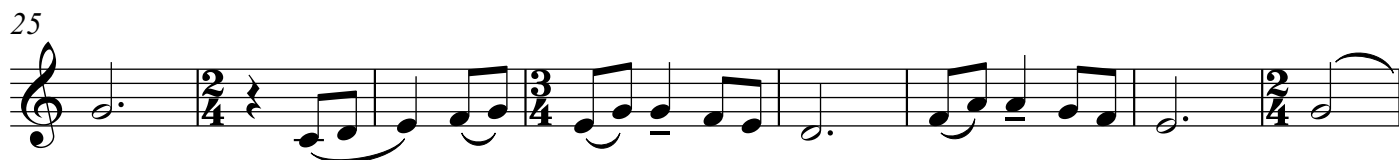
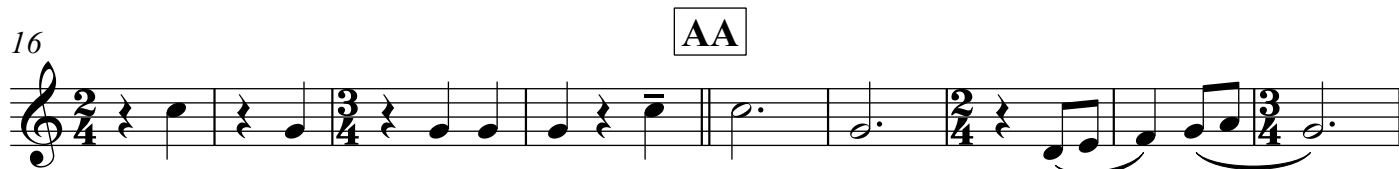
Volksgut

♩ im 3/4 Takt = ♩ im 2/4 Takt

(Bayerischer Bauer)

Bearb. Josef Wimmer

A



C) Posaune in B

Landauer-Zwiefacher

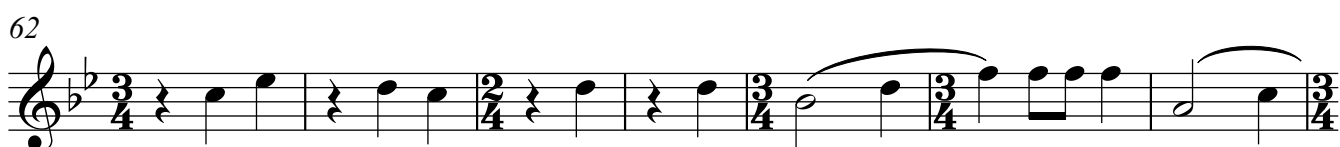
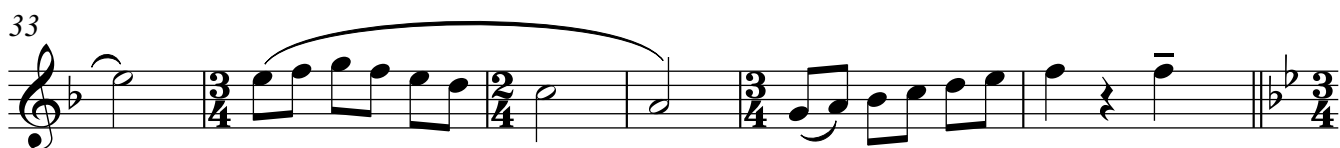
♩ im 3/4 Takt = ♩ im 2/4 Takt

(Bayerischer Bauer)

Volksgut

Bearb. Josef Wimmer

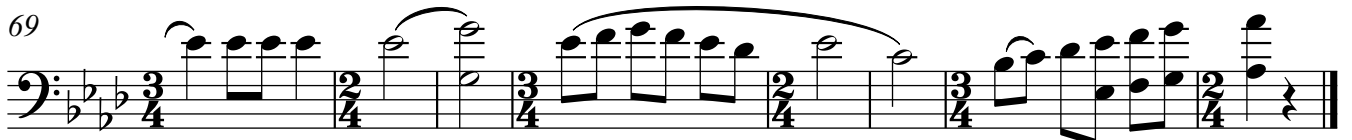
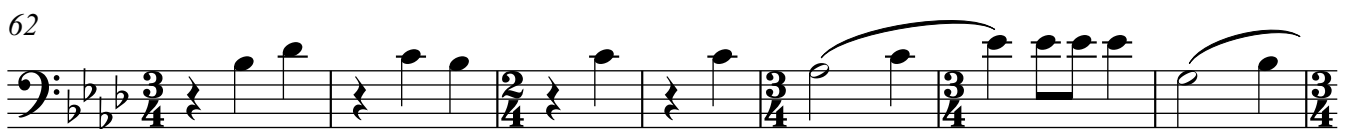
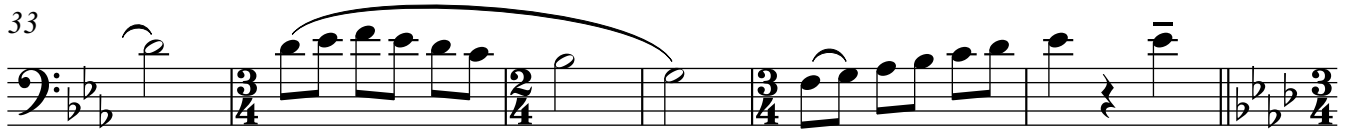
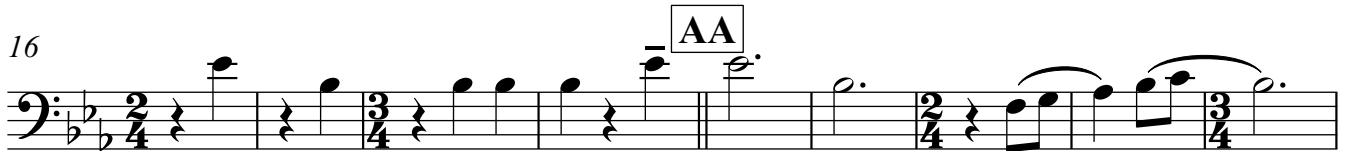
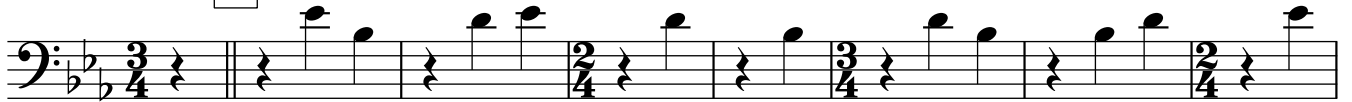
A



C) Posaune in C Landauer-Zwiefacher
♩ im 3/4 Takt = ♩ im 2/4 Takt (Bayerischer Bauer)

Volksgut
Bearb. Josef Wimmer

A



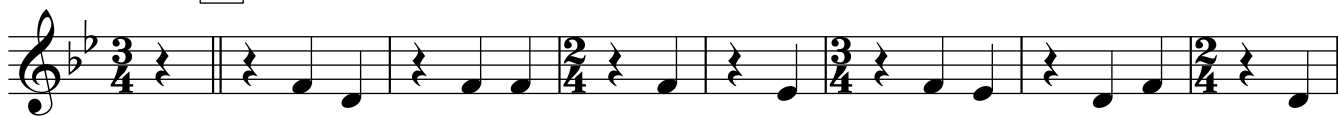
D) Horn in F

Landauer-Zwiefacher (Bayerischer Bauer)

♩ im 3/4 Takt = ♩ im 2/4 Takt

Volksgut
Bearb. Josef Wimmer

A



8

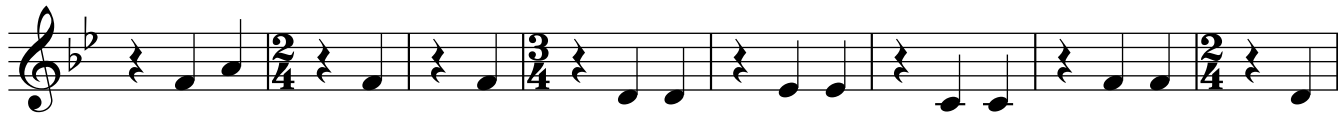


16

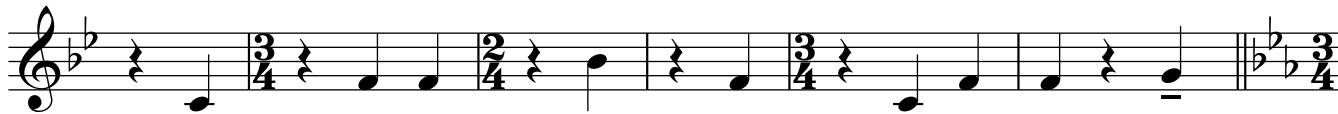
AA



25

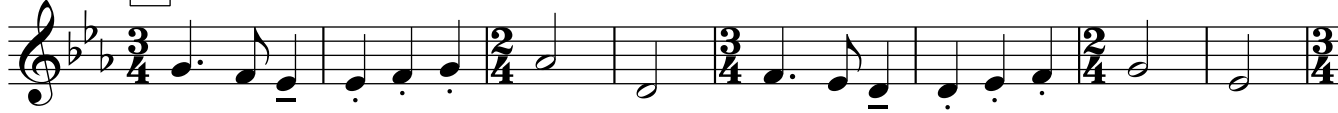


33



39

B

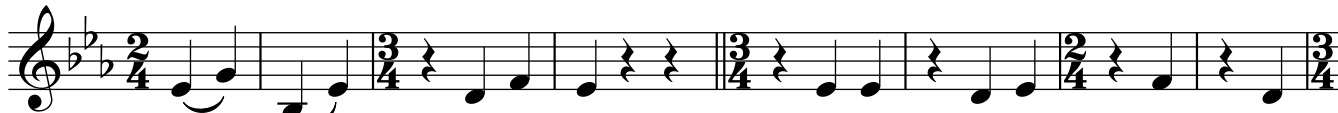


47



54

BB



62



69



D) Horn in Es

Landauer-Zwiefacher

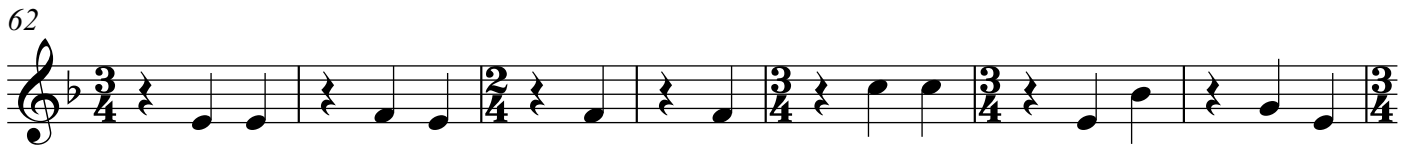
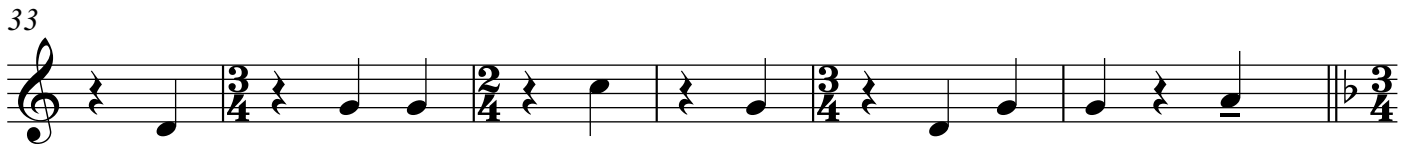
Volksgut

♩ im 3/4 Takt = ♩ im 2/4 Takt

(Bayerischer Bauer)

Bearb. Josef Wimmer

A



D) Posaune in B

Landauer-Zwiefacher

Volksgut

♩ im 3/4 Takt = ♩ im 2/4 Takt

(Bayerischer Bauer)

Bearb. Josef Wimmer

A



8



16

AA



25



33



39

B



47



54

BB



62



69



D) Posaune in C

Landauer-Zwiefacher

Volksgut

♩ im 3/4 Takt = ♩ im 2/4 Takt

(Bayerischer Bauer)

Bearb. Josef Wimmer

A



8



16

AA



25



33



39

B



47



54

BB



62



69



E) Tuba in C (hoch)/ Kontrabass

Landauer-Zwiefacher

♩ im 3/4 Takt = ♩ im 2/4 Takt (Bayerischer Bauer)

Volksgut
Bearb. Josef Wimmer

A



8



16

AA



25



33



39

B

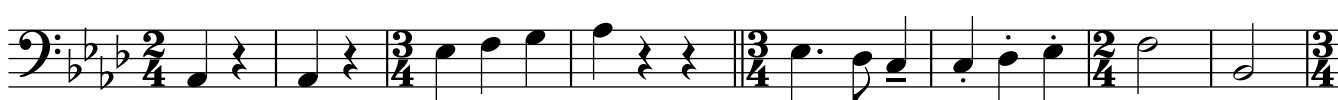


47



54

BB



62



69



E) Tuba in C (tief)

Landauer-Zwiefacher

Volksgut

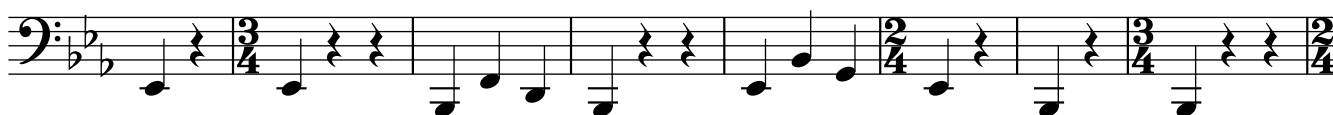
♩ im 3/4 Takt = ♩ im 2/4 Takt (Bayerischer Bauer)

Bearb. Josef Wimmer

A



8



16

AA



25

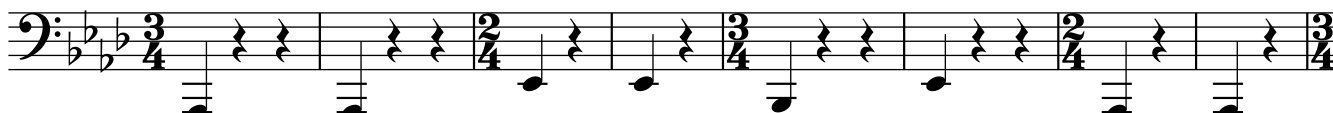


33



39

B



47



54

BB



62



69



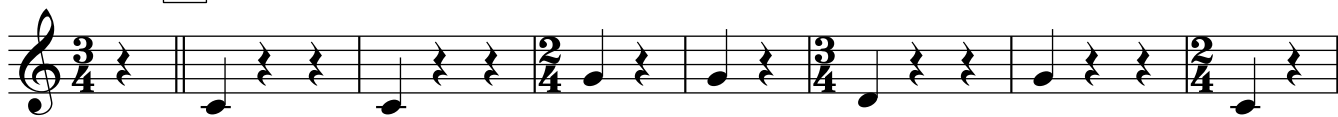
E) Tuba in Es

Landauer-Zwiefacher

♩ im 3/4 Takt = ♩ im 2/4 Takt (Bayerischer Bauer)

Volksgut
Bearb. Josef Wimmer

A



8

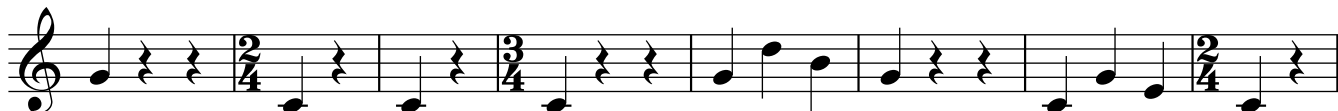


16

AA



25



33



39

B



47



54

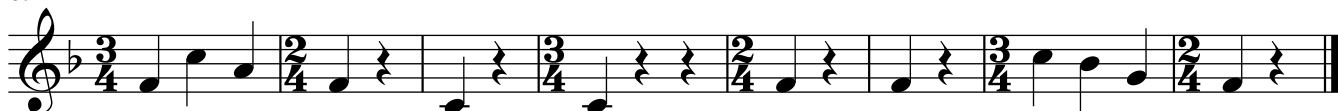
BB



62



69



E) Tuba in B

Landauer-Zwiefacher

Volksgut

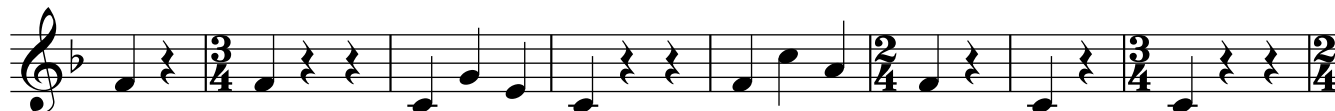
♩ im 3/4 Takt = ♩ im 2/4 Takt (Bayerischer Bauer)

Bearb. Josef Wimmer

A



8

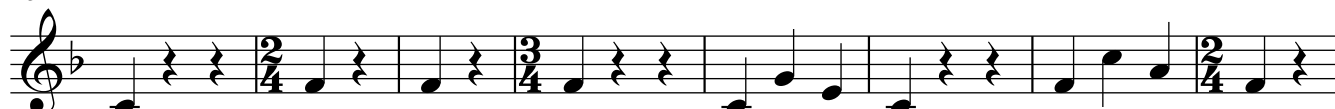


16

AA



25

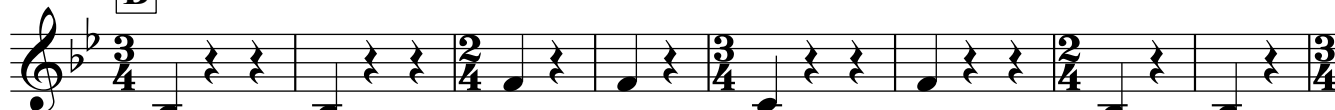


33



39

B



47



54

BB



62



69



Begleitung in C (ad lib.) Landauer-Zwiefacher

♩ im 3/4 Takt = ♩ im 2/4 Takt

(Bayerischer Bauer)

Volksgut

Bearb. Josef Wimmer

A Eb Bb7 Eb Bb7 Eb Bb7 Eb

8 Bb7 Eb Bb7

16 Eb Bb7 Eb **AA** Eb Bb7 Eb Bb7

25 Eb Bb7 Eb Bb7 Eb

33 Bb7 Eb Bb7 Eb

39 **B** Ab Eb7 Ab Eb7 Ab Eb7 Ab

47 Eb7 Ab Eb7

54 Ab Eb7 Ab **BB** Ab Eb7 Ab Eb9 Eb7

62 Ab Eb7 Ab Eb7

69 Ab Eb7 Ab Eb7 Ab

Schlagzeug (ad lib.) Landauer-Zwiefacher
im 3/4 Takt = im 2/4 Takt (Bayerischer Bauer)

Volksgut
Bearb. Josef Wimmer

A

8

18

AA

25

33

39

B

46

53

BB

62

70