

C: Horn in Es

Eisenkeilnest

Volksgut
Bearbeitung Josef Wimmer

A



10



18

AA



27



34

B



40



46

1. | 2.



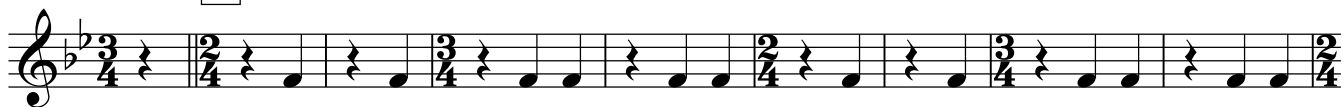
D.C. con rep
ad lib

C: Horn in F

Eisenkeilnest

Volksgut
Bearbeitung Josef Wimmer

A



10



18

AA



27



34

B



40



46

1. | 2.



D.C. con rep
ad lib

C: Posaune in C

Eisenkeilnest

Volksgut
Bearbeitung Josef Wimmer

A



10



AA

18

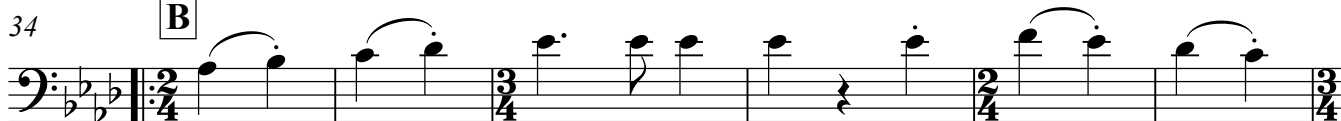


27

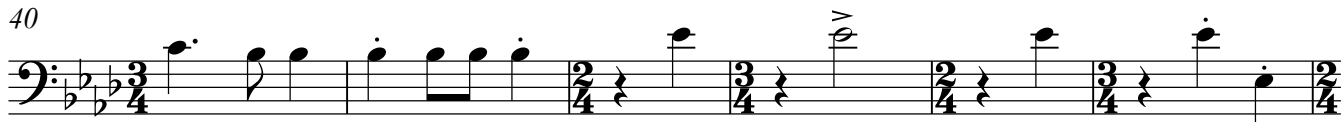


34

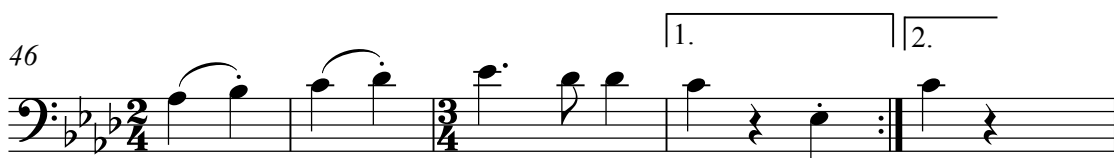
B



40



46



D.C. con rep
ad lib