

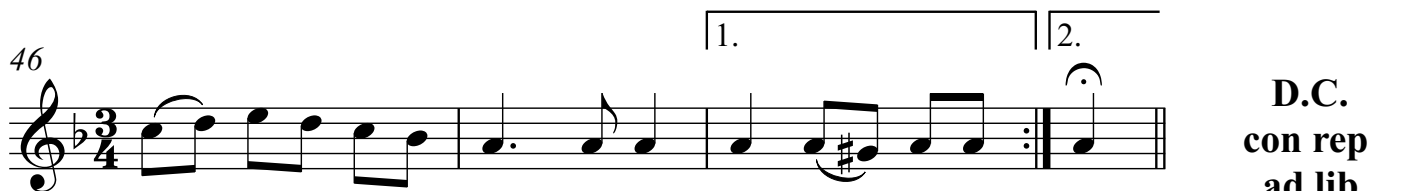
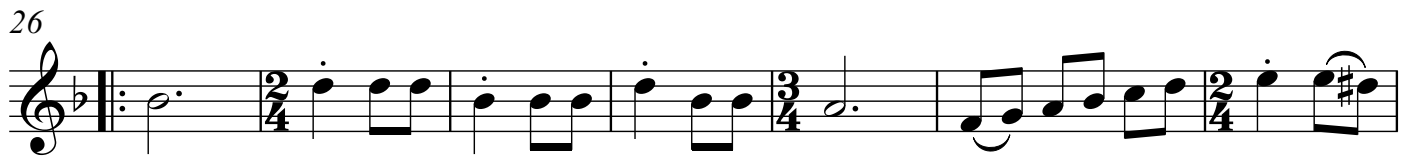
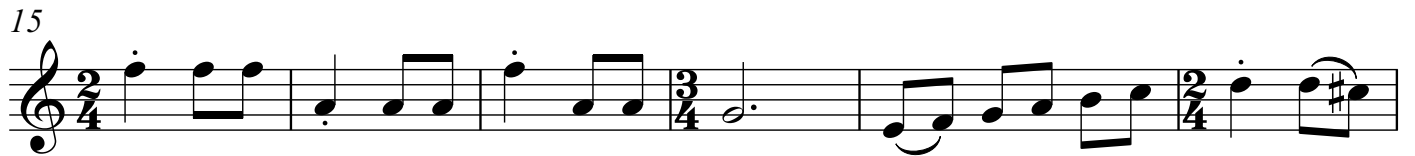
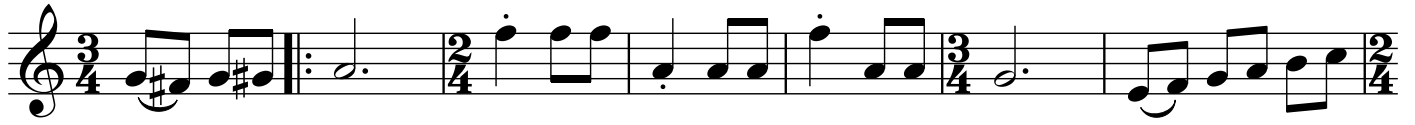
|                                   |   |
|-----------------------------------|---|
| <b>Titel:</b>                     | <b>Holledauer - Zwiefacher</b>  |
| <b>Quelle:</b>                    | Handschrift von Hans Mathes aus Vohburg (Lkr. Pfaffenhofen) im Bezirksarchiv Niederbayern, von vielen niederbayerischen Musikanten gespielt. Ich finde er passt sehr gut zur Holledau, daher auch die Namensgebung. |
| <b>Komponist:</b>                 | <b>Volksgut</b>   |
| <b>Arrangeur/<br/>Bearbeiter:</b> | <b>Josef Wimmer</b>   |
| <b>Besetzung:</b>                 | <b>Bassflügelhorn und Flügelhorn</b>  |

|          |  |          |                               |          |                      |
|----------|--|----------|-------------------------------|----------|----------------------|
|          | Direktion                                  |          | 1. Horn in Es                 |          | Schlagzeug           |
|          | Piccolo                                    |          | 2. Horn in Es                 |          | große Trommel        |
|          | Flöte in C                                 |          | 3. Horn in Es                 |          | kleine Trommel       |
|          | 2. Flöte in C                              |          | 4. Horn in Es                 |          | Pauken               |
|          | 1. Oboe                                    |          | 1. Horn in F                  |          | Lyra                 |
|          | 2. Oboe                                    |          | 2. Horn in F                  |          | Glockenspiel         |
|          | 1. Fagott                                  |          | 3. Horn in F                  |          | Xylophon             |
|          | 2. Fagott                                  |          | 4. Horn in F                  | <b>X</b> | Akkordeon            |
|          | Kontrafagott                               |          | 1. Tenorhorn in B             |          | Bandoneon            |
|          | Klarinette in Es                           |          | 2. Tenorhorn in B (Mel.)      |          | Harmonium            |
|          | Klarinette hoch in B= Es-Klarinette ad lib |          | 2. Tenorhorn in B             |          | Klavier              |
|          | 1. Klarinette in B (2. St.)                |          | 3. Tenorhorn in B             |          | 1. Nachschlaggeige   |
|          | 2. Klarinette in B(3. St.)                 |          | 4. Tenorhorn in B             |          | 2. Nachschlaggeige   |
|          | 3. Klarinette in B (oktav.)                | <b>X</b> | Tenorhorn/Posaune in B ad lib |          | Nachschlagbratsche   |
|          | Sopransaxophon                             |          | Bariton in C                  |          | 1. Violine (obligat) |
|          | 1. Altsaxophon in Es                       |          | Bariton in B                  |          | 1. Violine           |
|          | 2. Altsaxophon in Es                       |          | Bariton (Tanzmusi)            |          | 2. Violine           |
|          | 1. Tenorsaxophon in B                      | <b>X</b> | Bariton/Posaune in C ad lib.  |          | 3. Violine           |
|          | 2. Tenorsaxophon in B                      |          | Bariton in B (Melodie)        |          | Bratsche             |
|          | Baritonsaxophon in Es                      |          | 1. Posaune in C               |          | Cello                |
| <b>X</b> | Flügelhorn                                 |          | 2. Posaune in C               |          | Kontrabass           |
| <b>X</b> | Bassflügelhorn                             |          | 3. Posaune in C               |          | 1. Stimme            |
|          | 3. Flügelhorn in B                         |          | 4. Posaune in C               |          | 2. Stimme            |
|          | Flügelhorn in                              |          | 1. Posaune in B               |          | 3. Stimme            |
|          | Flügelhorn in                              |          | 2. Posaune in B               |          | 4. Stimme            |
|          | 1. Trompete in B = 1. Flü                  |          | 3. Posaune in B               |          | Nebenstimme          |
|          | 2. Trompete in B = 2. Flü                  |          | 4. Posaune in B               |          | Gitarre              |
|          | 3. Trompete in B                           |          | 1. Basstrompete in B          |          | Sopranino            |
|          | 4. Trompete in B                           |          | 2. Basstrompete in B          |          | Sopranblockflöte     |
|          | 1. Begleittrumpete in B                    |          | 1. Basstrompete in C          |          | Altblockflöte        |
|          | 2. Begleittrumpete in B                    |          | 2. Basstrompete in C          |          | Tenorblockflöte      |
|          | 1. Trompete in                             | <b>X</b> | 1. Tuba in C                  |          | Bassblockflöte       |
|          | 2. Trompete in                             | <b>X</b> | 2. Tuba in C                  |          |                      |
|          | 1. Trompete in Es                          |          | 1. Tuba in B                  |          |                      |
|          | 2. Trompete in Es                          |          | 2. Tuba in B                  |          | Textblatt            |
|          | 3. Trompete in Es                          | <b>X</b> | Tuba in B                     |          | Liedblatt            |

Bassflügelhorn in B  
(Bassflü+Flü)

Holledauer-Zwiefacher

Volksgut  
Bearb. Josef Wimmer

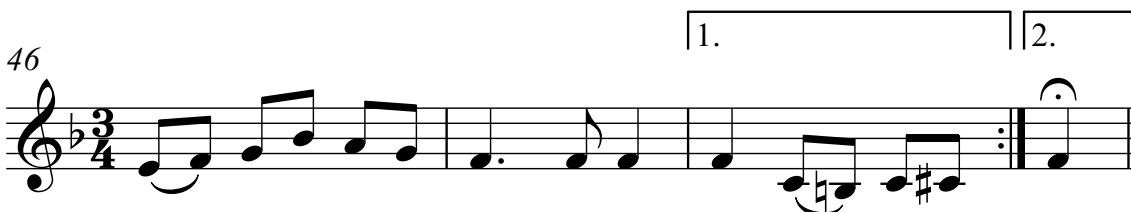
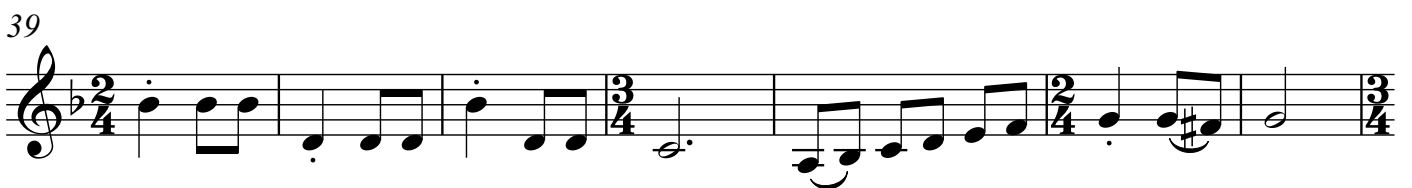
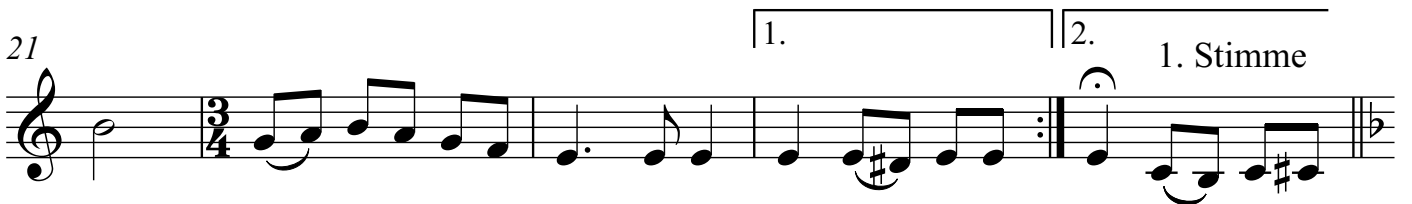
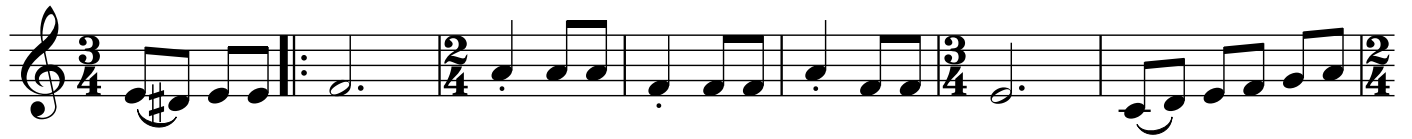


D.C.  
con rep  
ad lib

Flügelhorn in B/  
(Bassflü+Flü)

# Holledauer-Zwiefacher

Volksgut  
Bearb. Josef Wimmer

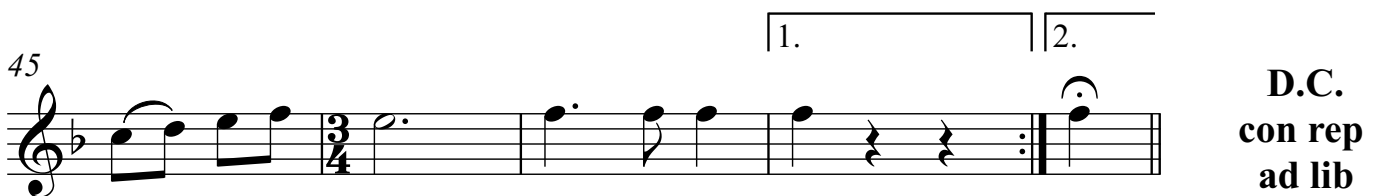
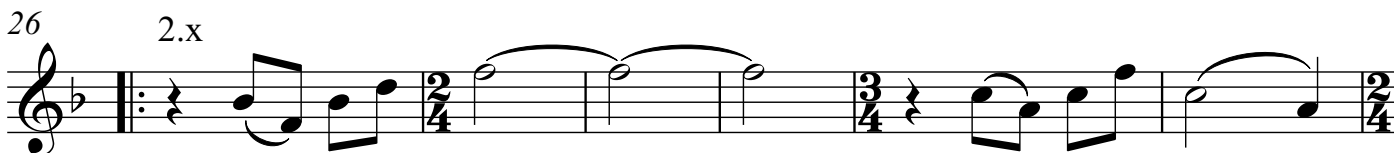
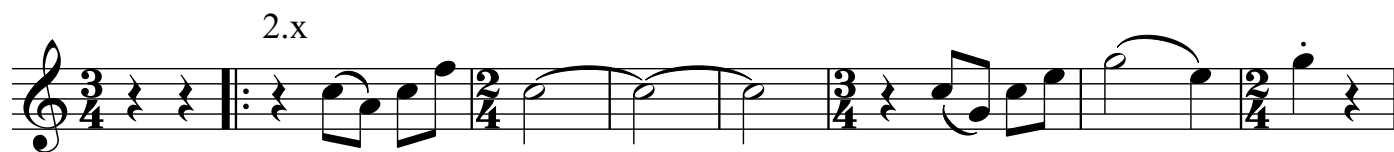


D.C.  
con rep  
ad lib

Tenorhorn/Posaune in B/  
(Bassflü+Flü)

# Holledauer-Zwiefacher

Volksgut  
Bearb. Josef Wimmer



**D.C.**  
**con rep**  
**ad lib**

Bariton/Posaune in C  
(Bassflü+Flü)

Volksgut  
Bearb. Josef Wimmer

# Holledauer-Zwiefacher

2.x

10

18

26

2.x

31

38

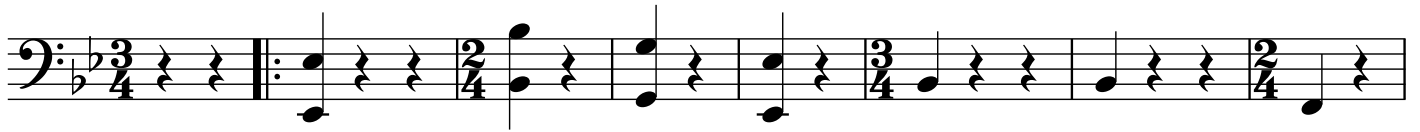
44

**D.C.**  
**con rep**  
**ad lib**

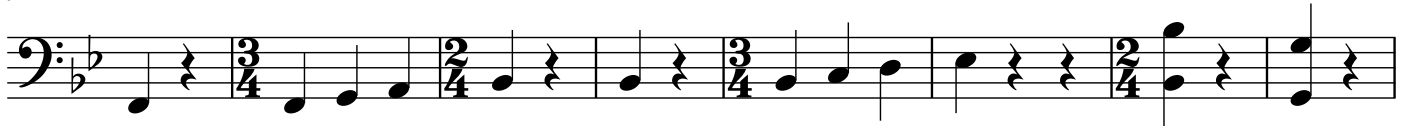
Tuba 1 in C/  
Kontrabass

# Holledauer-Zwiefacher

Volksgut  
Bearb. Josef Wimmer



9



17



24



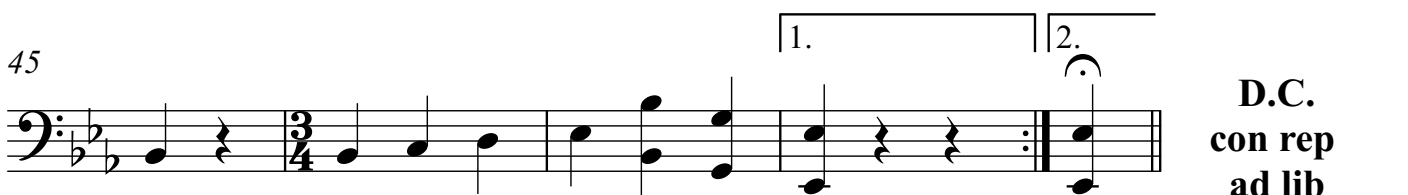
31



39



45



D.C.  
con rep  
ad lib

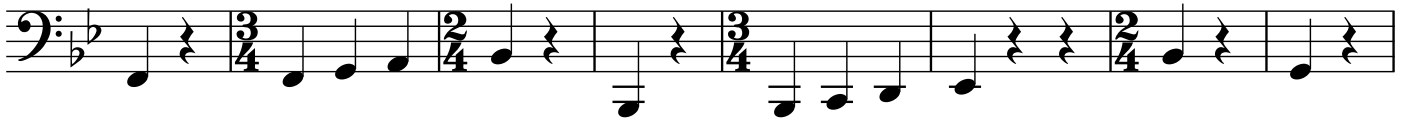
Tuba 2 in C

# Holledauer-Zwiefacher

Volksgut  
Bearb. Josef Wimmer



9



17



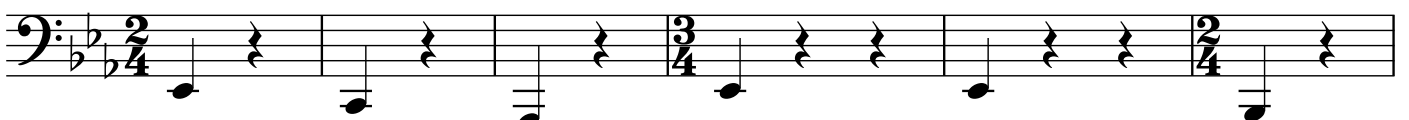
24



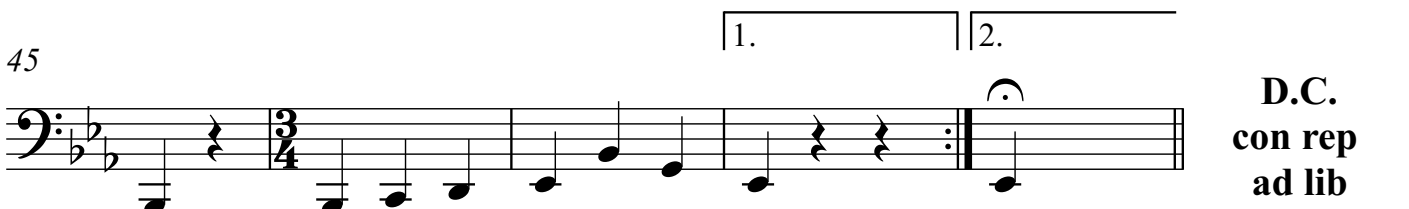
31



39



45

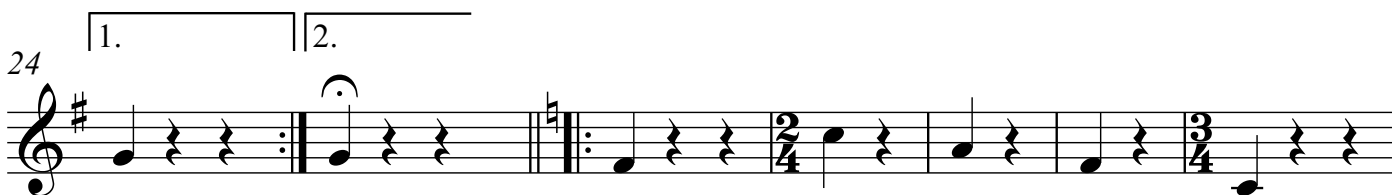
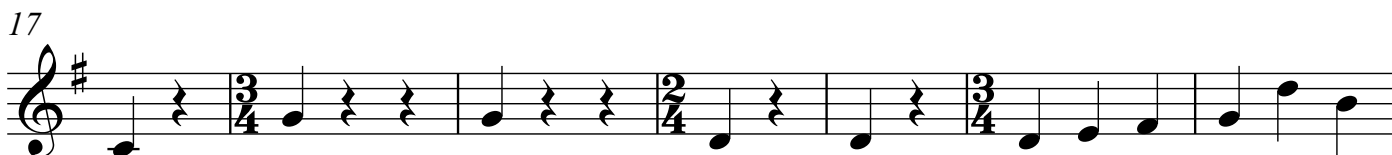


**D.C.**  
con rep  
ad lib

# Holledauer-Zwiefacher

Tuba in Es

Volksgut  
Bearb. Josef Wimmer



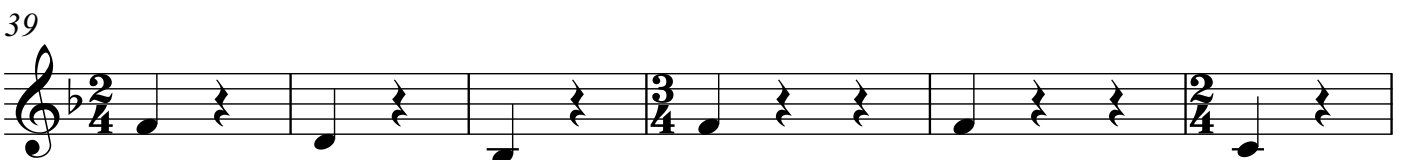
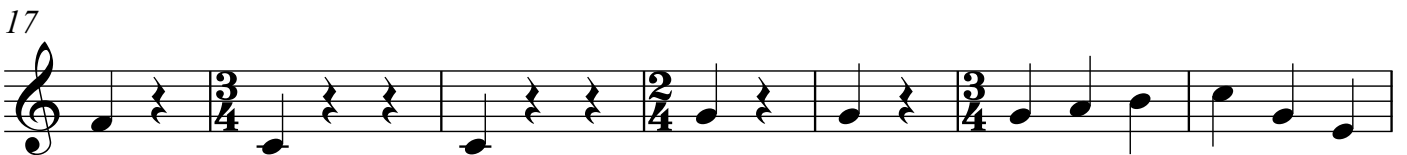
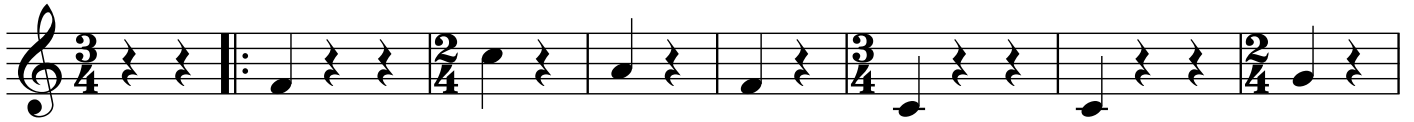
**D.C.**  
**con rep**  
**ad lib**



# Holledauer-Zwiefacher

Tuba in B

Volksgut  
Bearb. Josef Wimmer



**D.C.**  
con rep  
ad lib

# Holledauer-Zwiefacher

Akkordeon

Volksgut  
Bearb. Josef Wimmer

8 Eb Bb

15 F7 Bb Eb

22 Bb F7

26 Ab Eb Bb7

33 Eb Ab

40 Eb Bb7

45 Eb

1. 2.

D.C.  
con rep  
ad lib