

A) Tromba (alto) in B

Alter Hopfavogel

Musik: Volksgut

Bearb. Josef Wimmer

A) $\text{♩} \frac{3}{4} = \text{♩} \frac{4}{4}$ Takt

mf

B

mf

C *f* *mf* *f* *mf* *f* *mf*

letzt. Mal oben

1. 2. **Fine**

D Pos-Bar

E Pos-Bar *mf*

F *f* *mf* *f* *mf* *f*

D.C.
con rep
al Fine

B) Flügelhorn in B

Alter Hopfavogel

Musik: Volksgut
 Bearb. Josef Wimmer

Trp1Es **A** $\text{♩ } 3/4 = \text{♩ } 4/4$ Takt

B Trp1Es

C

1. 2. **Fine**

D Tenh

E Tenh

F

1. 2.

D.C. con rep al Fine

B) Flügelhorn/Trompete in C

Alter Hopfavogel

Musik: Volksgut
 Bearb. Josef Wimmer

Trp1Es **A** $\frac{3}{4} = \frac{4}{4}$ Takt

mf

B Trp1Es

mf

C

f *mf*

1. *f* *mf* *f* 2. **Fine**

D Tenh

mf *mf*

E Tenh

mf

F

f *mf*

1. *f* *mf* *f* 2.

mf *f* *mf* *f*

D.C.
 con rep
 al Fine

C) Althorn/Tenorhorn 1 in B

Alter Hopfavogel

Musik: Volksgut
Bearb. Josef WimmerA $\text{♩ } 3/4 = \text{♩ } 4/4 \text{ Takt}$

mf

B

mf

f

C 2.x

1. f

2. Fine

mf

< f

f

mf

D

E

mf

F 2.x

1. f

2.

D.C. con rep al Fine

mf

< f

f

C) Horn in F (= Alt-, Tenorhorn)

Alter Hopfavgogel

Musik: Volksgut

Bearb. Josef Wimmer

A) \downarrow 3/4 = \downarrow 4/4 Takt

mf

B) mf

C) 2.x 1. 2. Fine

D) mf < f f mf

E) mf

F) 2.x 1. 2. D.C. con rep al Fine

mf < f f

C) Horn in Es (= Alt-, Tenorhorn)

Alter Hopfavogel

Musik: Volksgut

Bearb. Josef Wimmer

A) \downarrow 3/4 = \downarrow 4/4 Takt

mf

B) mf

f

C) 2.x 1. 2. Fine < f f mf

D) mf

E) mf

F) 2.x 1. 2. D.C. con rep al Fine

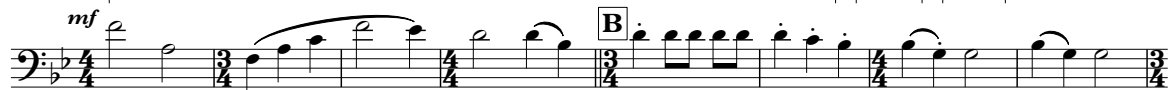
mf

f

f

C) Posaune / Bariton in C

Alter Hopfavogel

Musik: Volksgut
Bearb. Josef WimmerA \downarrow 3/4 = \downarrow 4/4 Takt

D) Trompete in C (= Trp. 1 in Es)

Alter Hopfavogel

Musik: Volksgut
Bearb. Josef Wimmer

A $\text{♩ } 3/4 = \text{♩ } 4/4 \text{ Takt}$

mf

B

mf

C

f *mf*

1. *f* *mf* *f* 2. **Fine**

D Pos-Bar

mf

E Pos-Bar

mf

F Trp-alto

f *mf* *f*

D.C. con rep al Fine

D) Trompete in B (= Trp. 1 in Es)

Alter Hopfavogel

Musik: Volksgut

Bearb. Josef Wimmer

A $\text{♩ } 3/4 = \text{♩ } 4/4$ Takt

mf

B *mf*

C *f* *mf* 1. 2. **Fine**

D Pos-Bar *mf* *f* *mf* *f*

E Pos-Bar *mf*

F Trp-alto *f* *mf* 1. 2. *f*

D.C.
con rep
al Fine

E) Trompete 2 in Es

Alter Hopfavogel

Musik: Volksgut

Bearb. Josef Wimmer

A) $\text{♩} \frac{3}{4} = \text{♩} \frac{4}{4}$ Takt*mf*

B

*mf*

C

fD) *mf**f* *mf* *f**mf*

E



F

f*mf**f* *f*D.C.
con rep
al Fine

E) Trompete in B (= Trp. 2 in Es)

Alter Hopfavogel

Musik: Volksgut
Bearb. Josef Wimmer

A ♩ 3/4 = ♩ 4/4 Takt

First staff of music, starting with a treble clef and a 3/4 time signature. It contains a sequence of notes and rests, with a dynamic marking of *mf* below the first few notes. The staff ends with a double bar line and a repeat sign.

Second staff of music, starting with a treble clef and a 4/4 time signature. It contains a sequence of notes and rests, with a dynamic marking of *mf* below the middle. The staff ends with a double bar line and a repeat sign.

Third staff of music, starting with a treble clef and a 3/4 time signature. It contains a sequence of notes and rests, with a dynamic marking of *f* above the end. The staff ends with a double bar line and a repeat sign.

Fourth staff of music, starting with a treble clef and a 4/4 time signature. It contains a sequence of notes and rests, with a dynamic marking of *f* above the end. The staff ends with a double bar line and a repeat sign.

Fifth staff of music, starting with a treble clef and a 4/4 time signature. It contains a sequence of notes and rests, with a dynamic marking of *mf* below the first few notes. The staff ends with a double bar line and a repeat sign.

Sixth staff of music, starting with a treble clef and a 3/4 time signature. It contains a sequence of notes and rests, with a dynamic marking of *f* above the end. The staff ends with a double bar line and a repeat sign.

Seventh staff of music, starting with a treble clef and a 4/4 time signature. It contains a sequence of notes and rests, with a dynamic marking of *f* above the end. The staff ends with a double bar line and a repeat sign.

Eighth staff of music, starting with a treble clef and a 4/4 time signature. It contains a sequence of notes and rests, with a dynamic marking of *mf* below the first few notes. The staff ends with a double bar line and a repeat sign.

Ninth staff of music, starting with a treble clef and a 4/4 time signature. It contains a sequence of notes and rests, with a dynamic marking of *f* above the end. The staff ends with a double bar line and a repeat sign.

D.C.
con rep
al Fine

E) Horn in F (= Trp. 2 in Es)

A ♩ 3/4 = ♩ 4/4 Takt

Alter Hopfavogel

Musik: Volksgut
Bearb. Josef Wimmer

mf **B** *mf* **C** *f* **D** *mf* *f* *mf* *f* **E** **F** *mf* *f* *f* **D.C. con rep al Fine**

E) Posaune in C (= Trp. 2 in Es)

Alter Hopfavogel

Musik: Volksgut
Bearb. Josef Wimmer

A \downarrow 3/4 = \downarrow 4/4 Takt



mf



B



mf



C

f

1.

2. Fine



D

mf

f

mf

f



E

mf



F

mf

f

f

D.C.
con rep
al Fine

F) Basstrompete 1 in B/Tenorhorn 2 in B

Alter Hopfavogel

Musik: Volksgut
Bearb. Josef Wimmer

A $\text{♩ } 3/4 = \text{♩ } 4/4$ Takt

mf

B
mf

f

C
mf

1. 2. **Fine**

D mf

f f

E
mf

f

F mf

1. 2. **Fine**

D.C.
con rep
al Fine

f f

F) Posaune in C (= Basstrompete 1) Alter Hopfavogel

Musik: Volksgut
 Bearb. Josef Wimmer

A ♩ 3/4 = ♩ 4/4 Takt

mf

B

mf

f

C

1. 2. Fine

D *mf*

mf *f* *f*

E

mf

f

F

1. 2. D.C. con rep al Fine

mf

f *f*

F) Horn in F (= Basstrompete 1)

Alter Hopfavogel

Musik: Volksgut
Bearb. Josef Wimmer

A ♩ 3/4 = ♩ 4/4 Takt

Staff A: Treble clef, 3/4 time signature. The melody consists of quarter notes and rests. The dynamic marking is *mf*.

Staff B: Treble clef, 4/4 time signature. The melody consists of quarter notes and rests. The dynamic marking is *mf*.

Staff C: Treble clef, 3/4 time signature. The melody consists of quarter notes and rests. The dynamic marking is *f*.

Staff C: Treble clef, 4/4 time signature. The melody consists of quarter notes and rests. The dynamic marking is *f*. It includes a first ending (1.) and a second ending (2. Fine).

Staff D: Treble clef, 4/4 time signature. The melody consists of quarter notes and rests. The dynamic marking is *mf*.

Staff E: Treble clef, 3/4 time signature. The melody consists of quarter notes and rests. The dynamic marking is *mf*.

Staff F: Treble clef, 4/4 time signature. The melody consists of quarter notes and rests. The dynamic marking is *f*.

Staff F: Treble clef, 4/4 time signature. The melody consists of quarter notes and rests. The dynamic marking is *mf*. It includes a first ending (1.) and a second ending (2.).

D.C.
con rep
al Fine

G) Basstrompete 2 in B/Tenorhorn 3 in B

Alter Hopfavogel

Musik: Volksgut
Bearb. Josef Wimmer

A $\text{♩ } 3/4 = \text{♩ } 4/4$ Takt

mf

B

mf

C

f

D mf

f f

E

mf

F

f

F

mf

f f

F

mf

f f

D.C.
con rep
al Fine

G) Posaune in C (= Basstrompete 2) Alter Hopfavogel

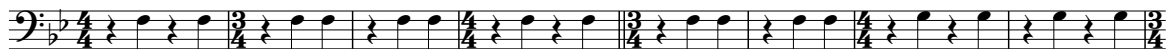
Musik: Volksgut
Bearb. Josef Wimmer

A \downarrow 3/4 = \downarrow 4/4 Takt



mf

B

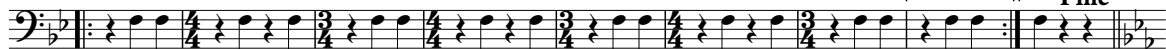


mf



f

C



1. 2. **Fine**

D *mf*

f *f*

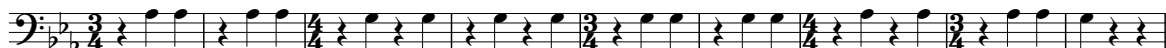


mf

E



mf



f

F



mf

f *f*

D.C.
con rep
al Fine

H) Posaune/ Bariton in B

Alter Hopfavogel

Musik: Volksgut
Bearb. Josef Wimmer

A $\frac{3}{4} = \frac{4}{4}$ Takt
tacet/erst bei D.C. spielen

A *mf*

B *mf* spielen

C 2.x *f* 1. *f* 2. *Fine*

D *mf* *f* *ad lib.* *f* *mf*

E *mf* spielen *mf*

F *f* *mf* *f* *D.C.*
con rep
al Fine

H) Posaune / Bariton in C

Alter Hopfavogel

Musik: Volksgut

Bearb. Josef Wimmer

3/4 = 4/4 Takt

A tacet/erst bei D.C. spielen

A *mf*

B *mf*

C 2.x *mf* 1. *f* 2. *f* **Fine** *mf*

D *ad lib.*

E *mf* spielen

F *mf* spielen

f *mf* *f* **D.C. con resp. al Fine**

I) Tuba in C (hoch)

Alter Hopfavogel

Musik: Volksgut
 Bearb. Josef Wimmer

A $\frac{3}{4} = \frac{4}{4}$ Takt

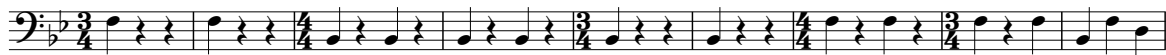


mf

B



mf



f

mf

C



1. Fine

2. Fine

f *mf* *f*

D



mf

E



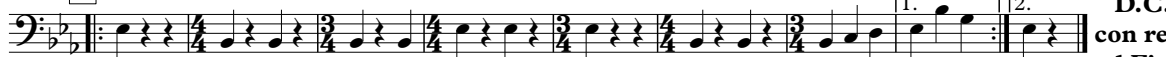
mf



f

mf

F



1. Fine

2. Fine

f *mf* *f*

D.C.

con rep
 al Fine

I) Tuba in C (tief)

Alter Hopfavogel

Musik: Volksgut
Bearb. Josef WimmerA $\text{♩ } 3/4 = \text{♩ } 4/4$ Takt

mf

B

mf

f

mf

C

1. 2. Fine

f mf f

D

mf

mf

E

mf

F

f

mf

f

1. 2.

mf

f

mf

f

D.C.
con rep
al Fine

I) Tuba in B

Alter Hopfavogel

Musik: Volksgut
Bearb. Josef WimmerA) $3/4 = \text{♩} 4/4$ Takt

mf

B) mf

f mf

C) 1. 2. Fine // f mf f

D) mf mf

E) mf

F) 1. 2. D.C. con rep al Fine f mf f

J) Schlagzeug (ad lib)

D

mf

mf

F

f

mf

1.

2.

f

mf

f

D.C.
con rep
al Fine

