

<b>Titel:</b>	<b>Zigeuner-Arie</b>
<b>Quelle:</b>	Tonbandaufzeichnung des Instituts für Volkskunde, München, von 1971, Aufzeichnung einer Hochzeitskapelle aus Saldenburg (Lkr. Freyung-Grafenau), Tonbandnr. 5g/312-3311, der 1. Teil entspricht dem 1. Teil des Volkstanzes "Triangel", Sammlung Max Kloiber, Garham, Handschrift des Ludwig Christoph, Hofkirchen-Entweg
<b>Hinweis:</b>	Das Stück wurde zum „Halb ab“ gespielt, d.h. ein Stück wurde unterbrochen. Es ging dann ein Musiker zum Geldsammeln zu den Tänzern, da in früheren Zeiten nämlich kein Eintritt verlangt wurde. Während des Einsammelns spielten die Musiker diese Melodie.
<b>Komponist:</b>	<b>Volksgut</b>
<b>Arrangeur/ Bearbeiter:</b>	<b>Josef Wimmer</b>
<b>Besetzung:</b>	<b>Kleine Blasmusik</b>

<b>X</b>	Direktion	<b>X</b>	1. Horn in Es	<b>X</b>	Schlagzeug
	Piccolo	<b>X</b>	2. Horn in Es		große Trommel
<b>X</b>	Flöte in C	<b>X</b>	3. Horn in Es		kleine Trommel
	2. Flöte in C		4. Horn in Es		Pauken
	1. Oboe	<b>X</b>	1. Horn in F		Lyra
	2. Oboe	<b>X</b>	2. Horn in F		Glockenspiel
	1. Fagott	<b>X</b>	3. Horn in F		Xylophon
	2. Fagott		4. Horn in F	<b>X</b>	Akkordeon-Melodie
	Kontrafagott	<b>X</b>	1. Tenorhorn in B	<b>X</b>	Akkordeon-Begleitung
<b>X</b>	Klarinette in Es		2. Tenorhorn in B (Mel.)		Bandoneon
	2. Klarinette in Es	<b>X</b>	2. Tenorhorn in B		Harmonium
<b>X</b>	1. Klarinette in B=Es-Kla	<b>X</b>	3. Tenorhorn in B		Klavier
<b>X</b>	2. Klarinette in B	<b>X</b>	4. Tenorhorn in B		1. Nachschlaggeige
<b>X</b>	3. Klarinette in B (3. St.)		Tenorhorn (Tanzmusik)		2. Nachschlaggeige
<b>X</b>	3. Klarinette in B (oktav.)	<b>X</b>	Bariton in C		Nachschlagbratsche
	Sopransaxophon	<b>X</b>	Bariton in B		1. Violine (obligat)
	1. Altsaxophon in Es		Bariton in C (Tanzmusik)		1. Violine
	2. Altsaxophon in Es		Bariton in C (Melodie)		2. Violine
	1. Tenorsaxophon in B		Bariton in B (Melodie)		3. Violine
	2. Tenorsaxophon in B	<b>X</b>	1. Posaune in C		Bratsche
	Baritonsaxophon in Es	<b>X</b>	2. Posaune in C		Cello
<b>X</b>	1. Flügelhorn in B (Trpt)	<b>X</b>	3. Posaune in C	<b>X</b>	Kontrabass
<b>X</b>	2. Flügelhorn in B (Trpt)		4. Posaune in C		1. Stimme
<b>X</b>	Trompete in B (3. St)		2. Basstrompete in B		Sopranino
	4. Trompete in B		1. Basstrompete in C		Sopranblockflöte
<b>X</b>	Begleittrumpeten in B		2. Basstrompete in C		Altblockflöte
	Begleittrumpete in B	<b>X</b>	1. Tuba in C		Tenorblockflöte
	1. Trompete in	<b>X</b>	2. Tuba in C		Bassblockflöte
	2. Trompete in		1. Tuba in B		
	1. Trompete in Es		2. Tuba in B		Textblatt
	2. Trompete in Es	<b>X</b>	Tuba in B		Liedblatt

# Zigeuner-Arie-Kleine Blasmusik-Spielhinweise:

1. Bei den meisten Ausgaben ergibt sich folgende Stimmverteilung:

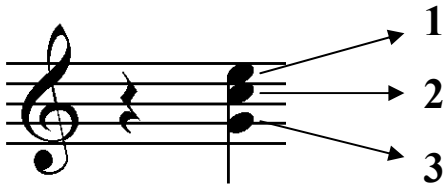
## a) Melodiestimmen

- |            |  |
|------------|--|
| 1. Stimme: | 1. Klarinette in Es (oktavierend)<br>1. Klarinette in B (wie Es-Klarinette)<br>3. Klarinette in B (oktavierend)<br>Flöte in C (wie Es-Klarinette)<br>1. Flügelhorn / Trompete in B, Bariton in B, Bariton in C |
| 2. Stimme: | 2. Klarinette in B (oktavierend)<br>2. Flügelhorn / Trompete in B  |
| 3. Stimme  | 3. Trompete in B, 3. Klarinette in B (3.St), 1. Tenorhorn in B   |

## b) Begleitstimmen

Vorschlag: 1./2. Bass und Kontrabass in C, Tuba in B

Nachschlag:



- 1:** Begleittrompete in B (obere Stimme), 2. Tenorhorn in B, 1. Horn in Es/F, 1. Posaune in C  
**2:** Begleittrompete in B (untere Stimme), 3. Tenorhorn in B, 2. Horn in Es/F, 2. Posaune in C  
**3:** 4. Tenorhorn in B, 3. Horn in Es/F, 3. Posaune in C

Es können jederzeit die verschiedenen Nachschlaginstrumente kombiniert werden

## c) Mindestbesetzung

zwei Melodieinstrumente ( die in ihrer Tonlage zusammen passen), zwei Begleitstimmen (oder Begleitakkordeon) und Bass

2. **Vortrag:** Auf Vortrags-, Dynamik- und Phrasierungszeichen wurde weitgehend verzichtet. Es bleibt den Kapellen überlassen, diese nach eigenem Dafürhalten einzutragen.

In der Melodieführung sollten sich Holz und Blech abwechseln.

Es wurde die niederbayerische Form der Arie gewählt, d.h. die Arie (1. Teil) wird mit Nachschlag gespielt. Der 2. Teil ist ein Deutscher Dreher, dabei sind die markierten Viertel im Bass und die Nachschlagfigur wichtig.

Josef Wimmer, Büchlberg

# Zigeuner - Arie

Direktion

Volksgut  
Bearb. Josef Wimmer

ca. 56

**A**

Flö, Es-Kla, 1./3. Kla, 1. Trp/Flü, Bar

1. Stimme

2. Stimme

3. Stimme

Nachschlag/  
Bass

2. Kla, 2. Trp/Flü

1. Tenh, 3. Trp, 3. Kla (3.St.)

Detailed description: This block contains the first system of a musical score for 'Zigeuner - Arie'. It features four staves: three vocal staves (1. Stimme, 2. Stimme, 3. Stimme) and a bass staff (Nachschlag/Bass). The key signature is one flat (B-flat) and the time signature is 3/4. The music begins with a double bar line and a repeat sign. The vocal parts have a melodic line with eighth and quarter notes. The bass part provides harmonic support with chords and single notes. Instrumentation instructions are placed between the vocal staves: '2. Kla, 2. Trp/Flü' between the first and second staves, and '1. Tenh, 3. Trp, 3. Kla (3.St.)' between the second and third staves.

1.

Detailed description: This block contains the second system of the musical score, starting at measure 6. It continues with the same four-staff structure as the first system. The vocal parts continue their melodic lines, and the bass part provides accompaniment. A first ending bracket labeled '1.' spans the final two measures of the system. The notation includes various note values, rests, and dynamic markings.

10 ca. 104

2.

12 **B**

16 *rit.* ca. 104

1. 2.

Bariton

*rit.*

*rit.*

D.C. con rep  
ad lib

Flöte in C

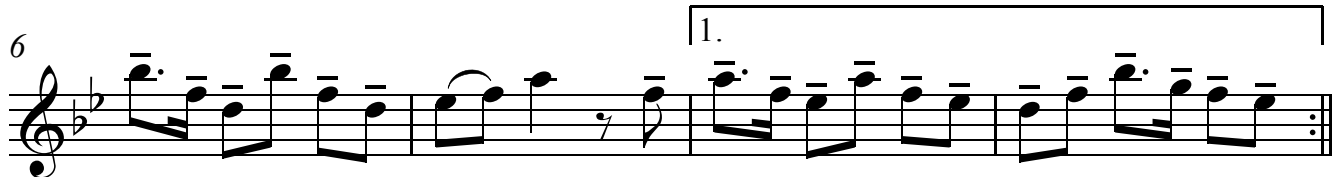
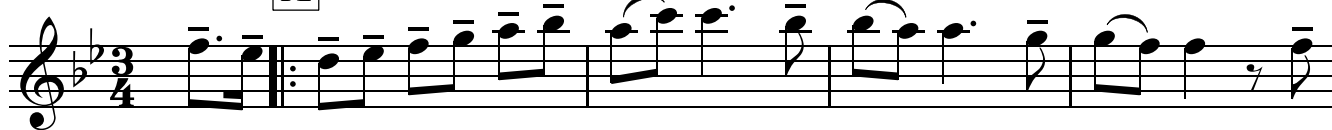
# Zigeuner - Arie

Volksgut

Bearb. Josef Wimmer

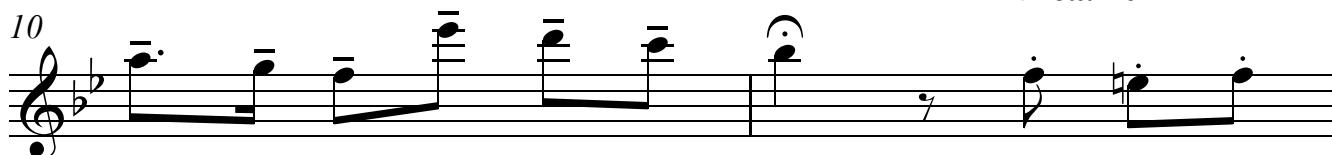
♪ ca. 56

**A**

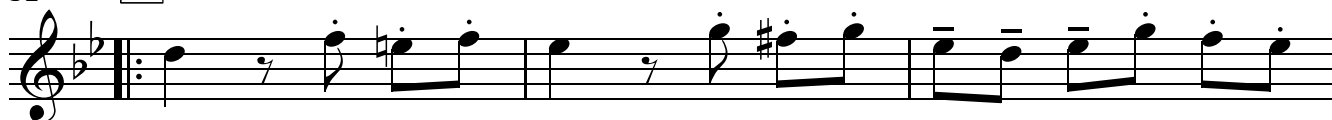


**2.**

♪ ca. 104



**B**

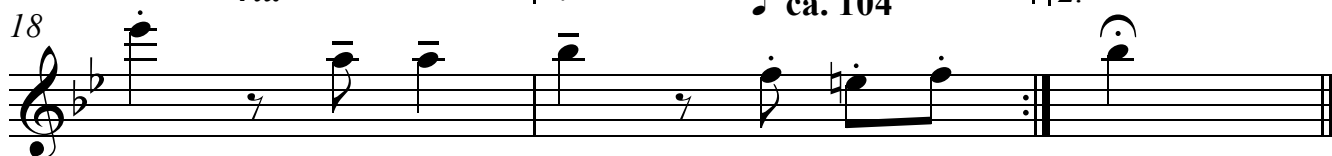


*rit.*

**1.**

♪ ca. 104

**2.**



**D.C. con rep  
ad lib**

Klarinette in Es

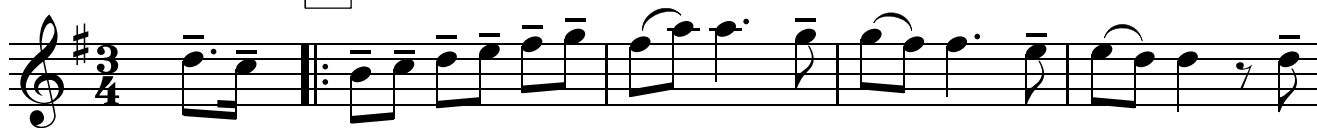
# Zigeuner - Arie

Volksgut

Bearb. Josef Wimmer

♪ ca. 56

**A**



6

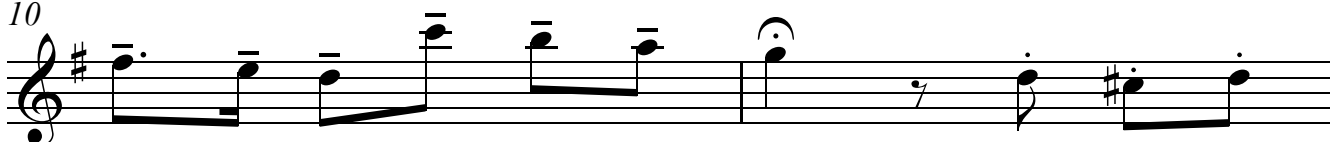
1.



2.

♪ ca. 104

10



12

**B**



15



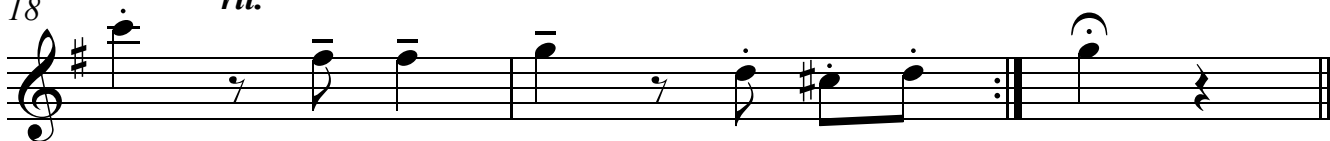
18

*rit.*

1.

♪ ca. 104

2.



D.C. con rep  
ad lib

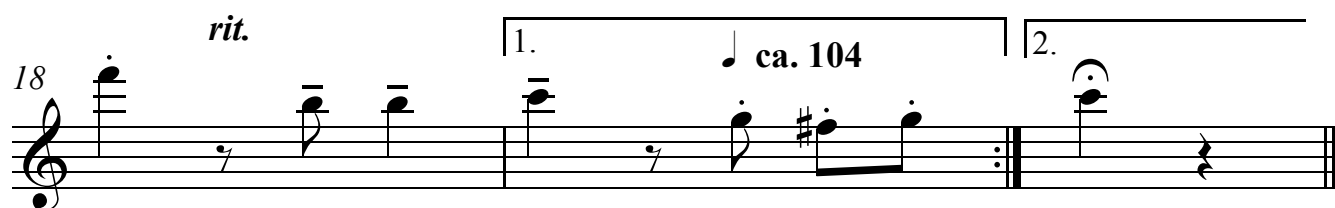
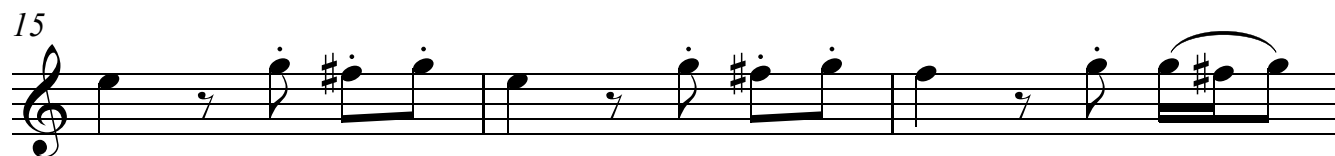
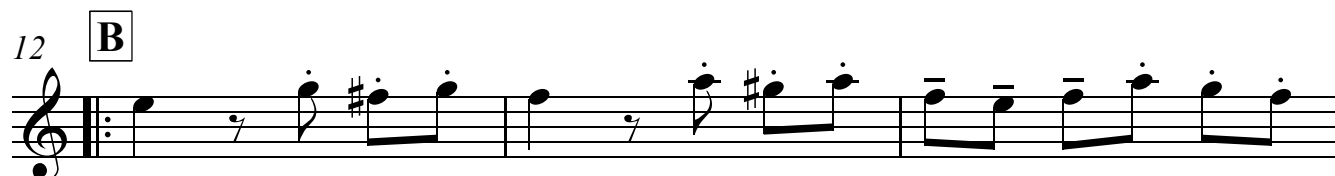
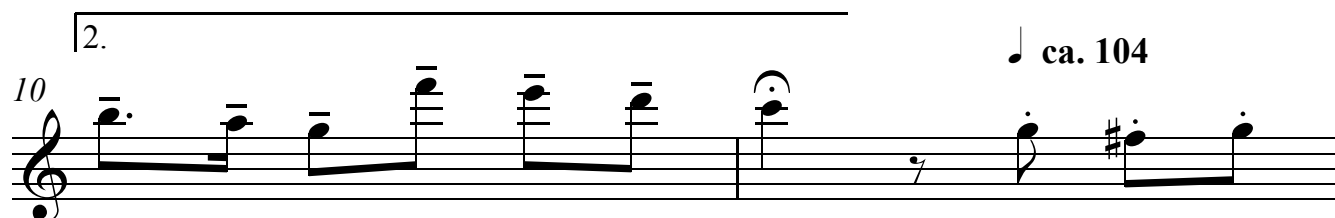
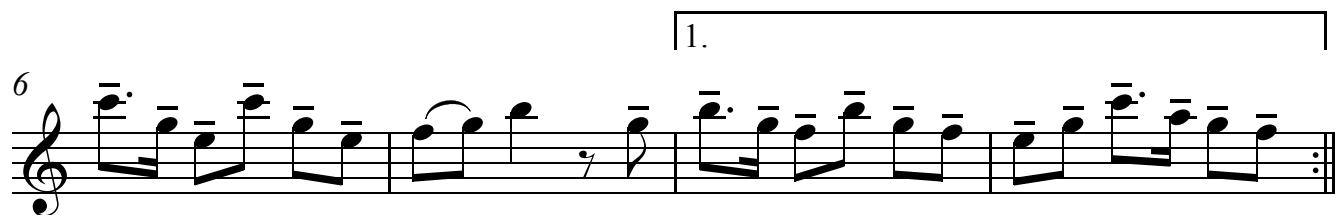
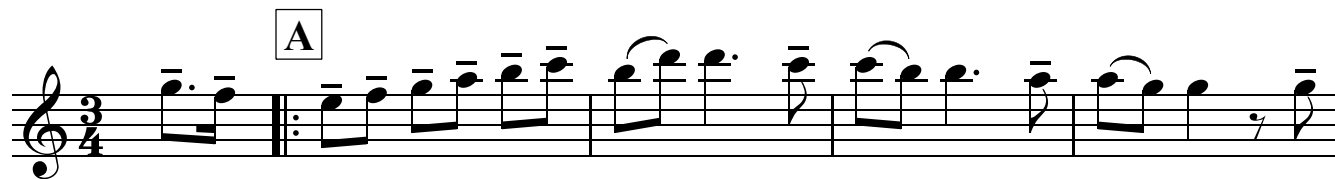
Klarinette 1 in B (= Es-Klarinette)

# Zigeuner - Arie

Volksgut

Bearb. Josef Wimmer

♩ ca. 56



D.C. con rep  
ad lib

Klarinette 2 in B

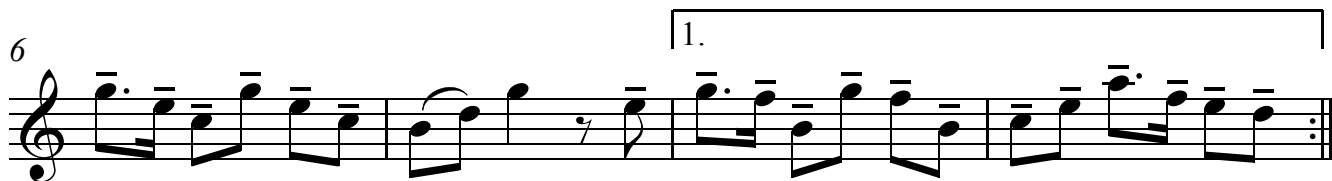
# Zigeuner - Arie

Volksgut

Bearb. Josef Wimmer

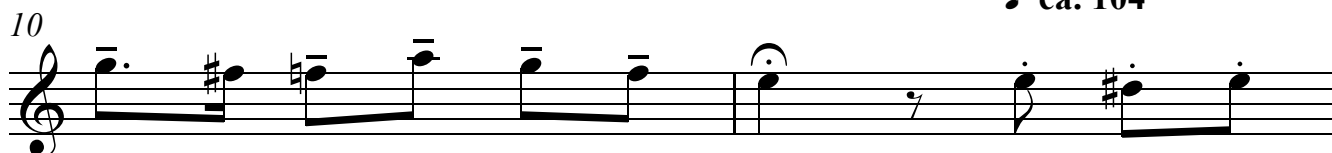
♪ ca. 56

**A**

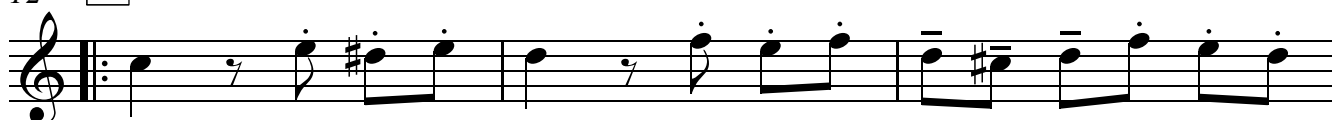


2.

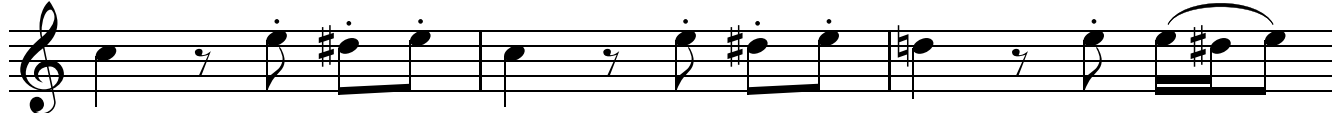
♪ ca. 104



12 **B**



15



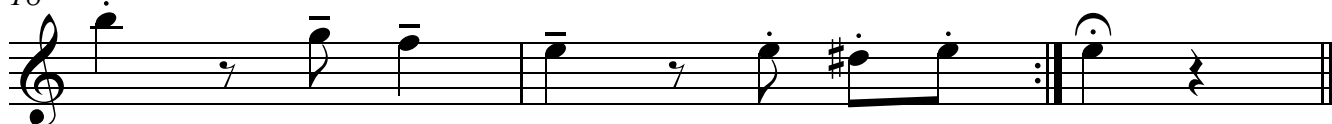
18

*rit.*

1.

♪ ca. 104

2.



D.C. con rep  
ad lib



Klarinette 3 in B (3. Stimme)

# Zigeuner - Arie

Volksgut  
Bearb. Josef Wimmer

♪ ca. 56

**A**



6

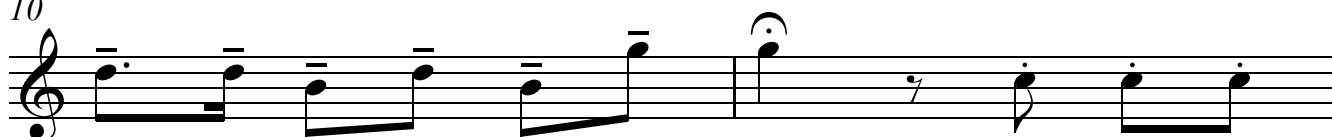
1.



2.

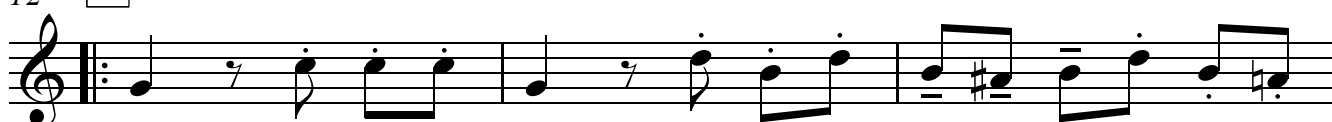
♪ ca. 104

10



12

**B**



15



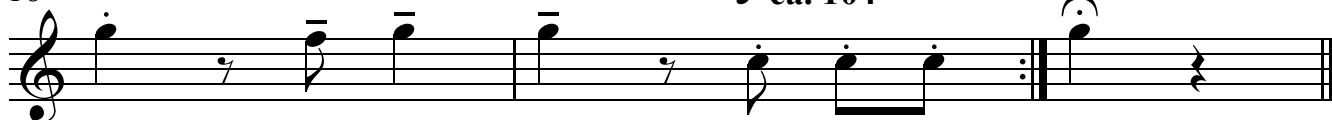
18

*rit.*

1.

♪ ca. 104

2.



**D.C. con rep  
ad lib**

Klarinette 3 in B (Melodie)

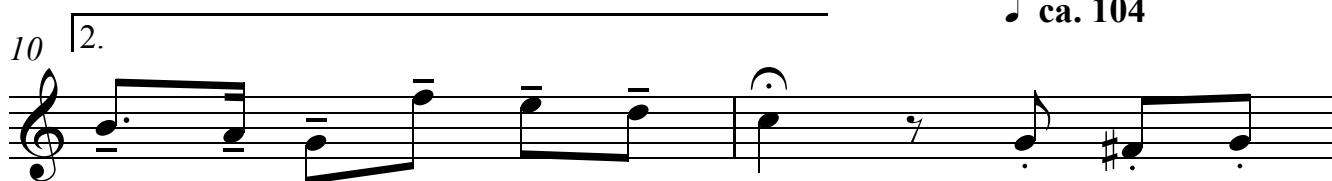
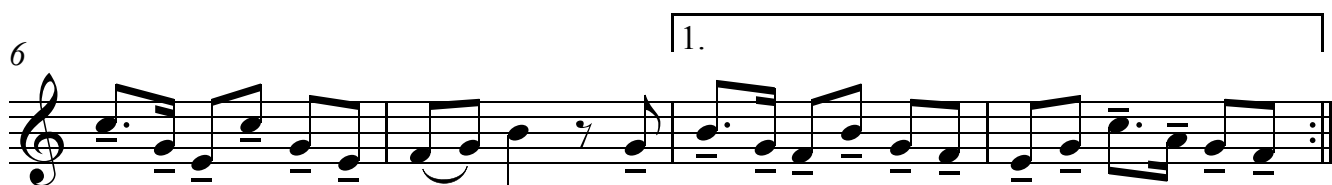
# Zigeuner - Arie

Volksgut

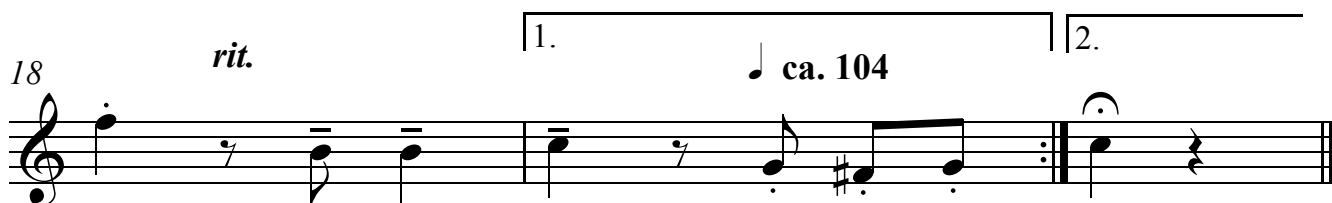
Bearb. Josef Wimmer

♩ ca. 56

**A**



♩ ca. 104



D.C. con rep  
ad lib

Trompete/Flügelhorn 1 in B

# Zigeuner - Arie

Volksgut

Bearb. Josef Wimmer

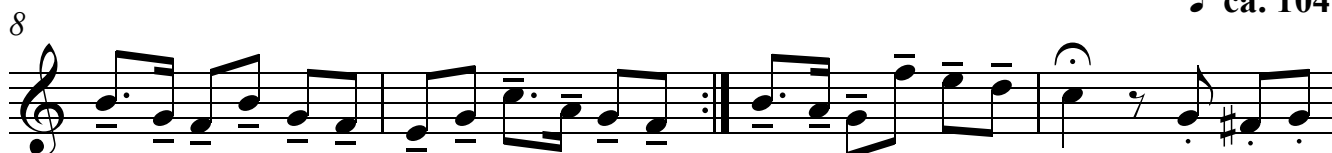
♩ ca. 56

**A**

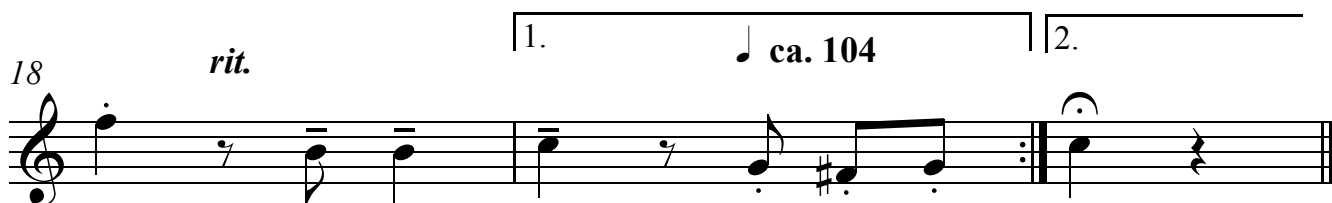


1. | 2.

♩ ca. 104



12 **B**



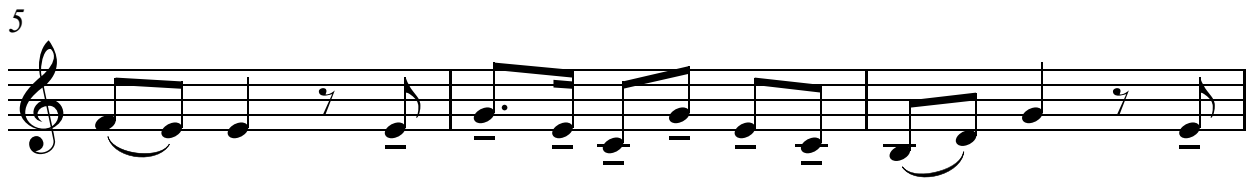
D.C. con rep  
ad lib

# Zigeuner - Arie

♪ ca. 56

Volksgut  
Bearb. Josef Wimmer

**A**



1. | 2.

♪ ca. 104



12 **B**



18 *rit.* 1. | 2. ♪ ca. 104



**D.C. con rep  
ad lib**

# Zigeuner - Arie

Trompete 3 in B

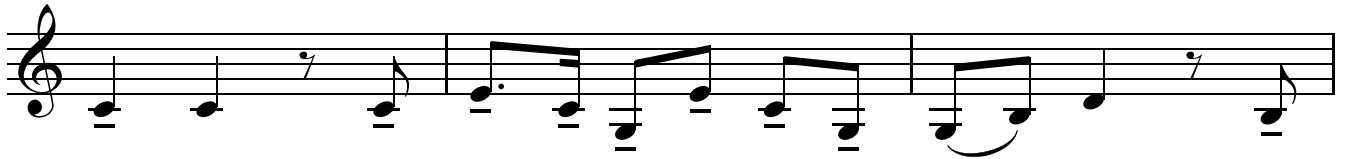
Volksgut  
Bearb. Josef Wimmer

ca. 56

A



5

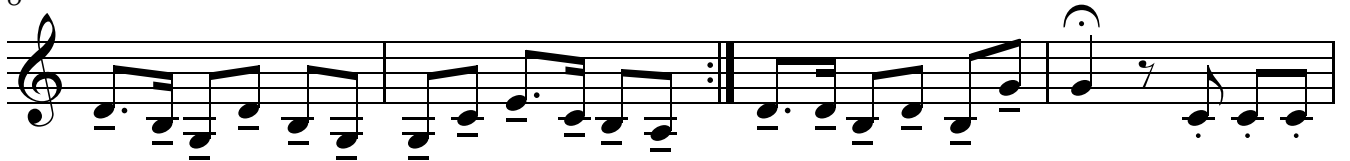


8

1.

2.

ca. 104

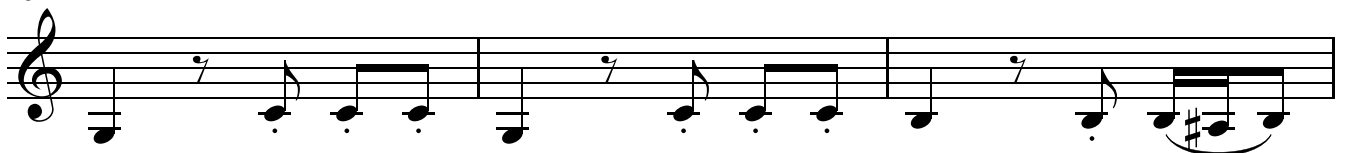


12

B



15



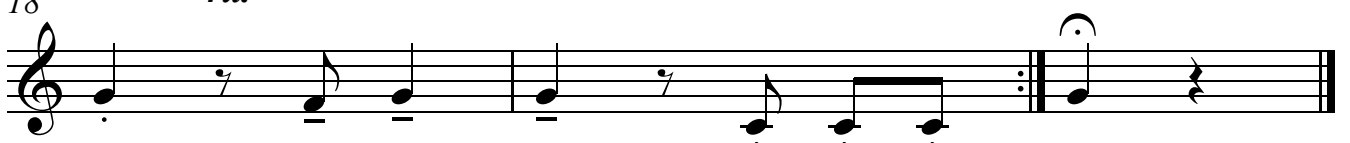
18

*rit.*

1.

ca. 104

2.



D.C. con rep  
ad lib



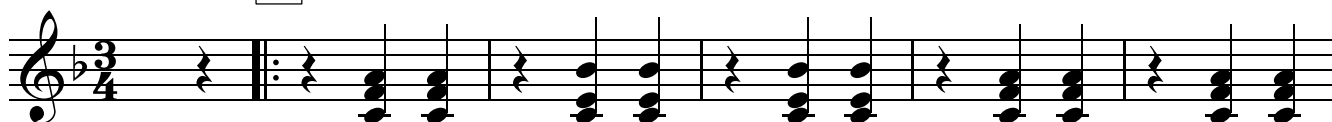
1. - 3. Horn in F

# Zigeuner - Arie

♪ ca. 56

Volksgut  
Bearb. Josef Wimmer

**A**



1.

2.

7



12

**B**

♪ ca. 104



15



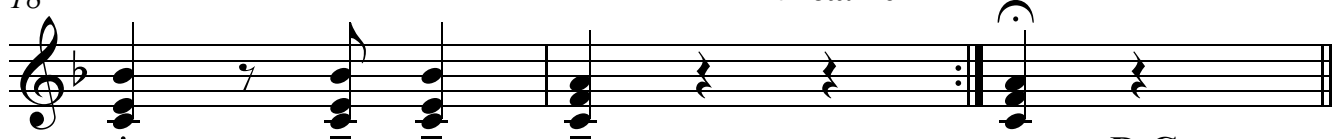
1.

2.

18

*rit.*

♪ ca. 104



D.C. con rep  
ad lib

1. - 3. Horn in Es

# Zigeuner - Arie

♪ ca. 56

Volksgut  
Bearb. Josef Wimmer

**A**

Musical notation for section A, measures 1-6. Treble clef, key signature of one sharp (F#), 3/4 time signature. The music consists of six measures of chords with stems pointing up and down.

1.

2.

7

Musical notation for section A, measures 7-11. Treble clef, key signature of one sharp (F#), 3/4 time signature. Measures 7-10 are the first ending, and measure 11 is the second ending.

12

**B**

♪ ca. 104

Musical notation for section B, measures 12-14. Treble clef, key signature of one sharp (F#), 3/4 time signature. The music consists of three measures of eighth-note chords.

15

Musical notation for section B, measures 15-17. Treble clef, key signature of one sharp (F#), 3/4 time signature. The music consists of three measures of eighth-note chords.

1.

2.

18

*rit.*

♪ ca. 104

Musical notation for section B, measures 18-21. Treble clef, key signature of one sharp (F#), 3/4 time signature. Measures 18-20 are the first ending, and measure 21 is the second ending.

**D.C. con rep  
ad lib**



2. - 4. Tenorhorn in B

# Zigeuner - Arie

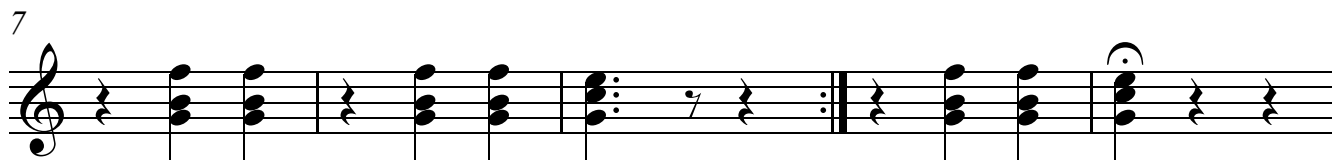
♪ ca. 56

Volksgut  
Bearb. Josef Wimmer

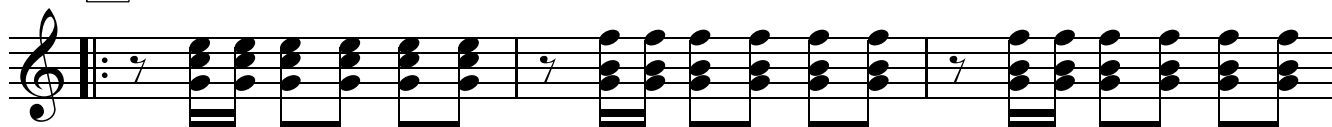
**A**



1. 2.



12 **B** ♪ ca. 104

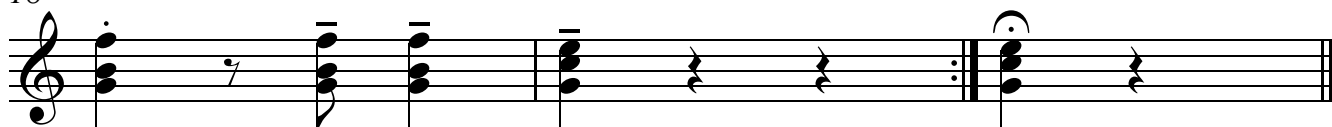


15



1. 2.

18 *rit.* ♪ ca. 104



**D.C. con rep  
ad lib**

# Zigeuner - Arie

1. - 3. Posaune in C

♪ ca. 56

Volksgut  
Bearb. Josef Wimmer

**A**

7

12 **B** ♪ ca. 104

15

18 *rit.* ♪ ca. 104

**D.C. con rep  
ad lib**

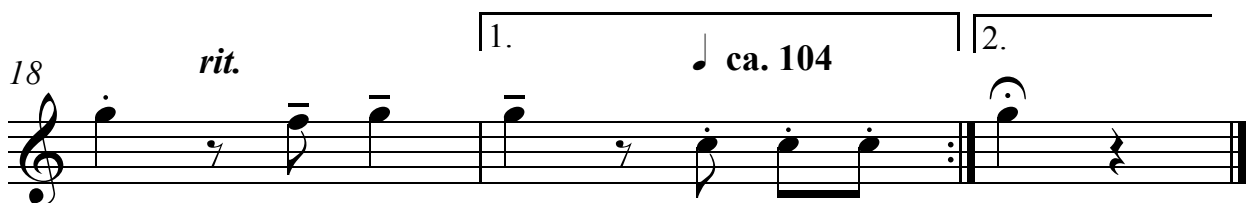
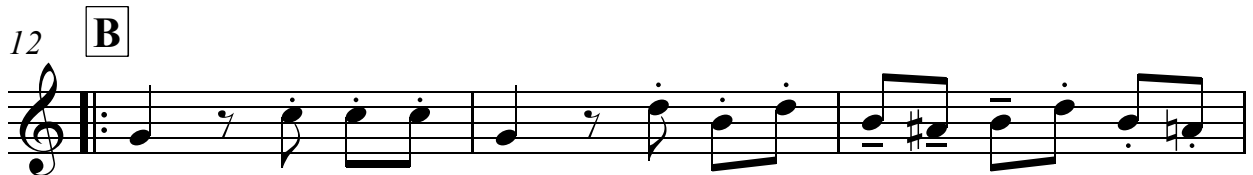
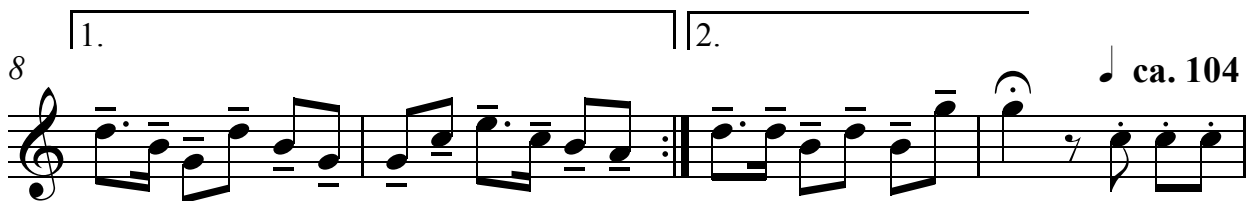
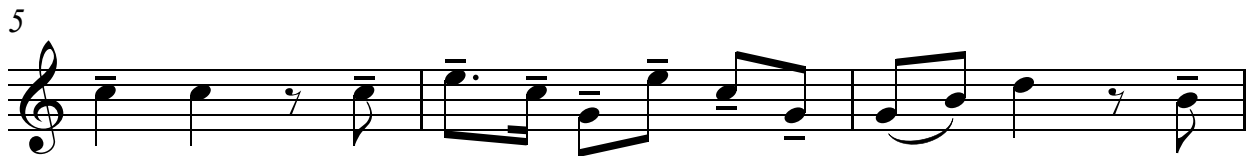
# Zigeuner - Arie

Tenorhorn 1 in B

Volksgut  
Bearb. Josef Wimmer

♪ ca. 56

A



D.C. con rep  
ad lib

# Zigeuner - Arie

Bariton in B

Volksgut  
Bearb. Josef Wimmer

♪ ca. 56

**A**



5

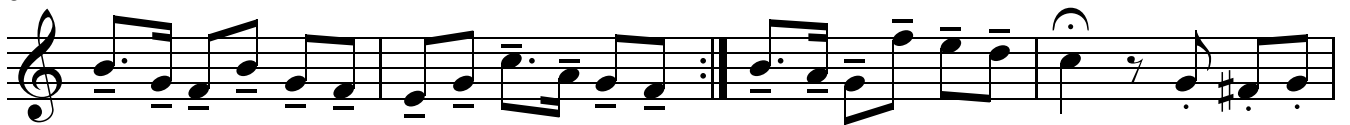


1.

2.

8

♪ ca. 104



12

**B**



15



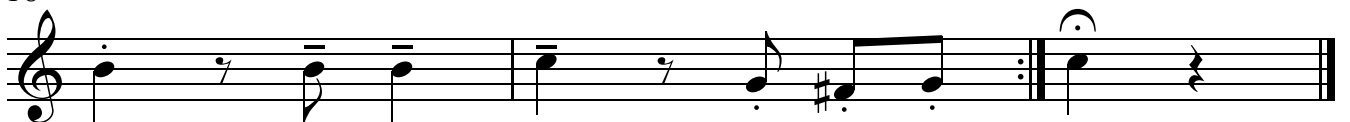
18

*rit.*

1.

♪ ca. 104

2.



D.C. con rep  
ad lib

# Zigeuner - Arie

Bariton in C

♪ ca. 56

Volksgut  
Bearb. Josef Wimmer

**A**



5



1.

2.

♪ ca. 104

8



12

**B**



15



18

*rit.*

1.

♪ ca. 104

2.



**D.C. con rep  
ad lib**

# Zigeuner - Arie

Tuba 1/2 in C (Kontrabass)

♩ ca. 56

Volksgut  
Bearb. Josef Wimmer

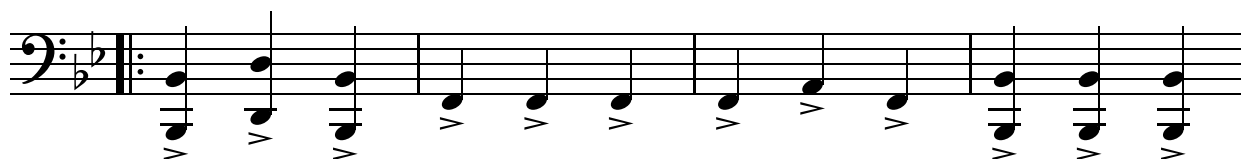
**A**



1. | 2.



12 **B** ♩ ca. 104



**D.C. con rep**  
**ad lib**

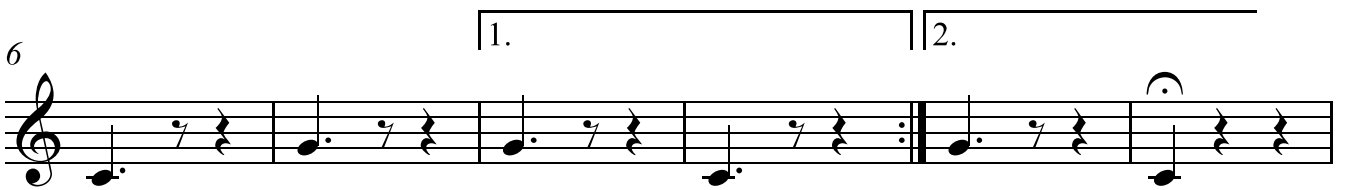
# Zigeuner - Arie

Tuba in B

♪ ca. 56

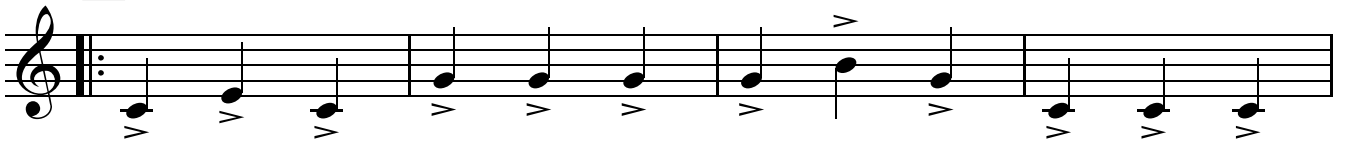
Volksgut  
Bearb. Josef Wimmer

**A**



♪ ca. 104

**B**



**D.C. con rep  
ad lib**

# Zigeuner - Arie

Schlagzeug

Volksgut  
Bearb. Josef Wimmer

♩ ca. 56

♩ ca. 104

**A**

6 2

12 **B**

15

18 *rit.*

1. 2.

♩ ca. 104

D.C. con rep  
ad lib



# Zigeuner - Arie

♩ ca. 56

Volksgut  
Bearb. Josef Wimmer

**A** B $\flat$  F $^7$  B $\flat$

7 F $^7$  B $\flat$  B $\flat$

1. 2.

♩ ca. 104

12 **B**<sub>B $\flat$</sub>  F $^7$

15 B $\flat$  F $^7$

18 *rit.* B $\flat$  ca. 104 B $\flat$

1. 2.

**D.C. con rep  
ad lib**

Akkordeon

# Zigeuner - Arie

♩ ca. 56

Volksgut  
Bearb. Josef Wimmer

**A** B $\flat$  F $^7$  B $\flat$

6 F $^7$  B $\flat$

1.

10 B $\flat$  ca. 104 **B** B $\flat$  F $^7$

2.

14 B $\flat$  F $^7$

18 *rit.* B $\flat$  ca. 104 B $\flat$

1. 2.

D.C. con rep  
ad lib