


Titel:	Liebestanz – Komm in meine Liebeslaube (Münchener-Polka, Boarischer)
Quelle:	Tanzheft des Hans Zettl (Pilsting): Seite 38 (Teil B und D unter dem Titel: Nr. 8 Polka – Liebestanz) und 60 (Teil A und C)
Komponist:	A, B, C: Volksgut, D: Karl Hoschna (1877 – 1911)
Arrangeur / Bearbeitung:	Josef Wimmer
Besetzung:	Klarinettenmusik für drei Klarinetten, das Stück ist auch mit zwei Klarinetten aufführbar

	Direktion	X	Horn in Es		Schlagzeug
	Piccolo		2. Horn in Es		große Trommel
	Flöte in C		3. Horn in Es		kleine Trommel
	2. Flöte in C		4. Horn in Es		Pauken
	1. Oboe	X	Horn in F		Lyra
	2. Oboe		2. Horn in F		Glockenspiel
	1. Fagott		3. Horn in F		Xylophon
	2. Fagott		4. Horn in F	X	Akkordeon
	Kontrafagott	X	Tenorhorn/Posaune in B		Bandoneon
X	Klarinette in Es = 1. Klarinette in B		2. Tenorhorn in B (Mel.)		Harmonium
	2. Klarinette in Es		2. Tenorhorn in B		Klavier
	Klarinette in B (hoch) = Es-Klarinette (Melodie)		3. Tenorhorn in B		1. Nachschlaggeige
X	1. Klarinette in B (1. St.)		4. Tenorhorn in B		2. Nachschlaggeige
X	2. Klarinette in B (2. St.)		Tenorhorn (Tanzmusi)		Nachschlagbratsche
X	3. Klarinette in B (3. St.)	X	Bariton/Posaune in C		1. Violine (obligat)
	Sopransaxophon		Bariton in B		1. Violine
	2. Tenorsaxophon in B		1. Posaune in C		Cello
	Baritonsaxophon in Es		2. Posaune in C	X	Kontrabass = 1. Tuba
	1. Flügelhorn in B = 1. Trp		3. Posaune in C		1. Stimme
	2. Flügelhorn in B = 2. Trp		4. Posaune in C		2. Stimme
	3. Flügelhorn in B		1. Posaune in B		3. Stimme
	Flügelhorn in		3. Posaune in B		Nebenstimme
	1. Trompete in B = 1. Flü		4. Posaune in B		Gitarre
	2. Trompete in B = 2. Flü		1. Basstrompete in B		Sopranino
	3. Trompete in B (3. St.) (ad lib)		2. Basstrompete in B		Sopranblockflöte
	4. Trompete in B		1. Basstrompete in C		Altblockflöte
	Begleittrumpeten in B		2. Basstrompete in C		Tenorblockflöte
	Begleittrumpete in B	X	1./2. Tuba in C		Bassblockflöte
	1. Trompete in		Tuba in C		
	2. Trompete in		1. Tuba in B	X	Begleitung in C
	1. Trompete in Es	X	Tuba in Es		Liedblatt (Gesang)
	2. Trompete in Es	X	Tuba in B		Liedblatt (Originalstrophen)

Klarinette in Es = Klarinette 1 in B (Klarinettenmusik)

Liebestanz - Komm in meine Liebeslaube

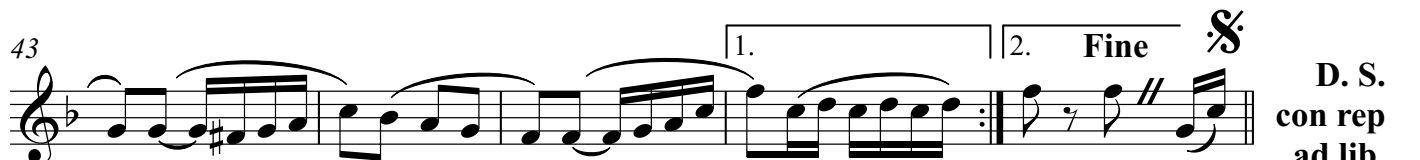
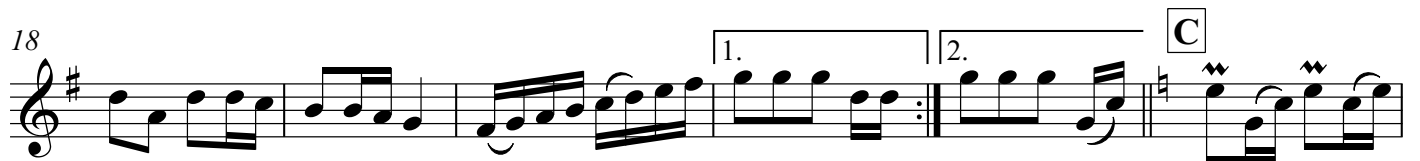
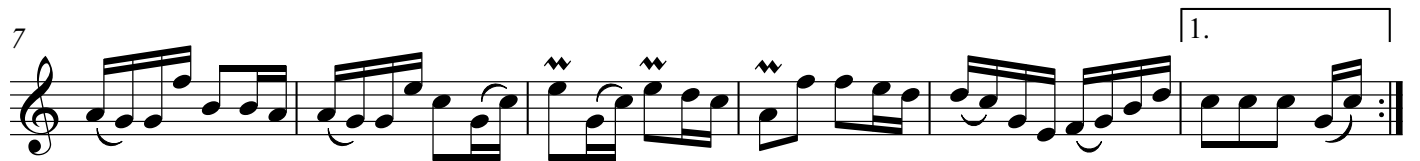
(Münchner Polka, Boarischer) 

A, B, C: Volksgut

D: Karl Hoschna


(1877 - 1911)

Bearb: Josef Wimmer



D. S.
con rep
ad lib.

Liebestanz - Komm in meine Liebeslaube

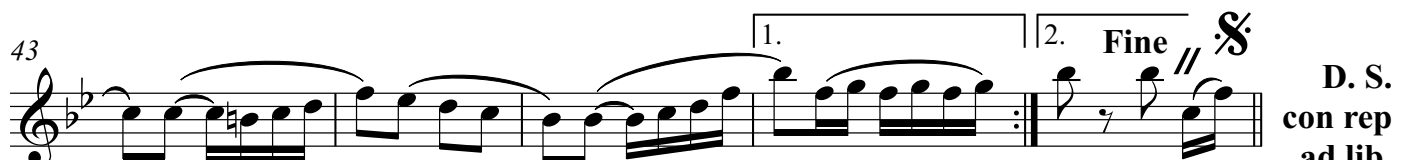
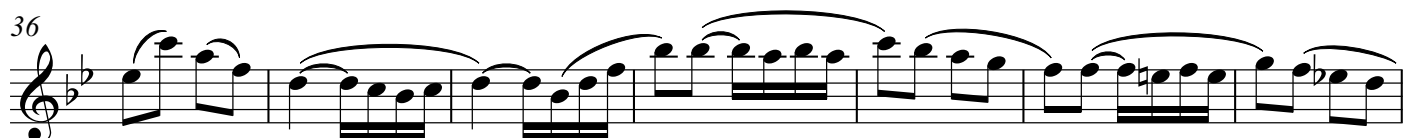
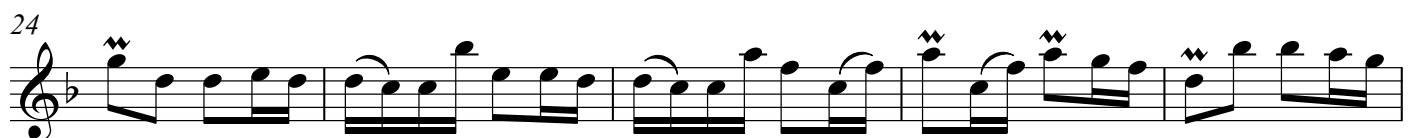
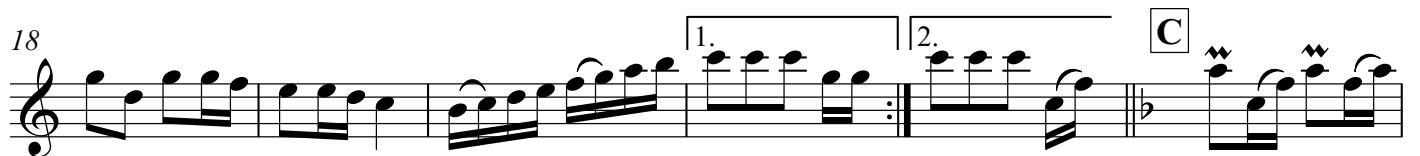
(Münchner Polka, Boarischer) 

A, B, C: Volksgut

D: Karl Hoschna

(1877 - 1911)


Bearb: Josef Wimmer



D. S.
con rep
ad lib.

Klarinette 2 in B (Klarinettenmusik)

Liebestanz - Komm in meine Liebeslaube

(Münchner Polka, Boarischer) 

A, B, C: Volksgut

D: Karl Hoschna

(1877 - 1911)

Bearb: Josef Wimmer

7



A 

7



1.

13



2. B

18



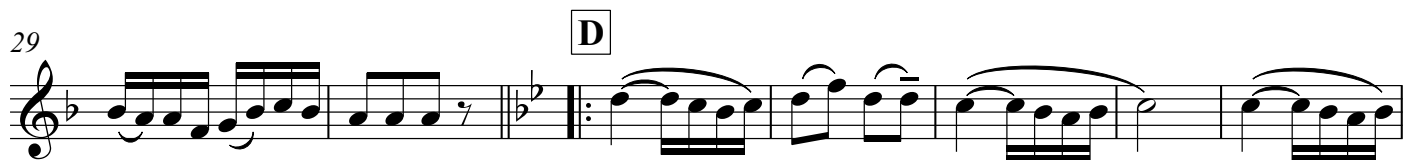
1. 2.

23



C 

29

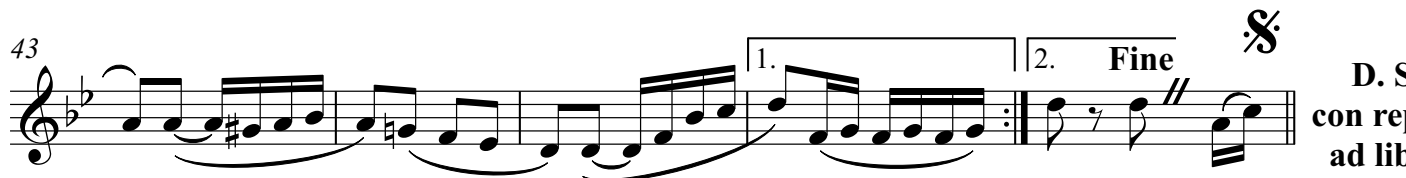



D

36



43




1. 2. Fine 

D. S.
con rep
ad lib.

Klarinette 3 in B (Klarinettenmusik)

Liebstanz - Komm in meine Liebeslaube

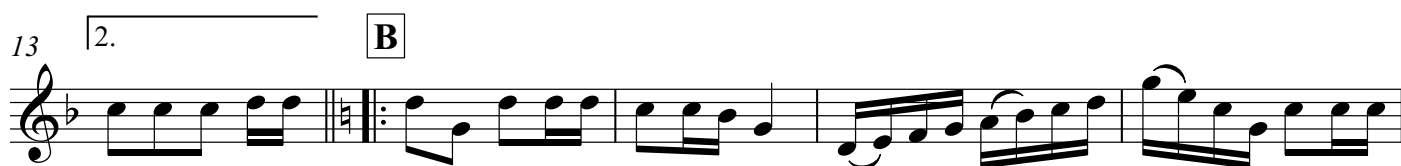
(Münchner Polka, Boarischer) 

A, B, C: Volksgut
D: Karl Hoschna
(1877 - 1911)
Bearb: Josef Wimmer

7



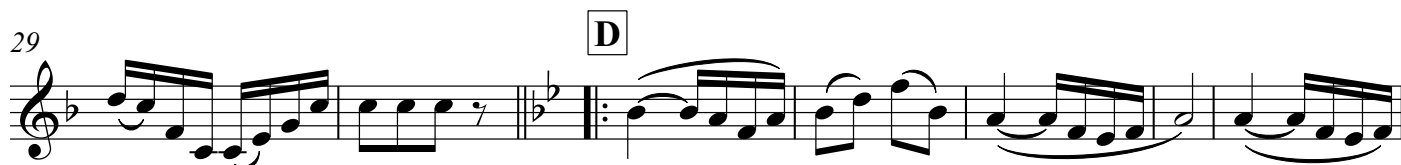
13



18



29



36



43



D. S.
con rep
ad lib.

Tenorhorn/ Posaune in B (Klarinettenmusik)

Liebestanz - Komm in meine Liebeslaube

(Münchner Polka, Boarischer)

A, B, C: Volksgut

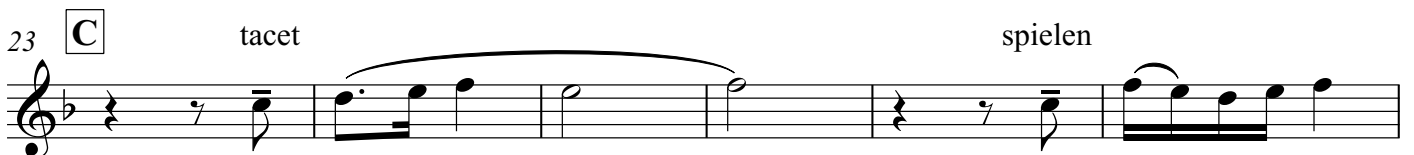
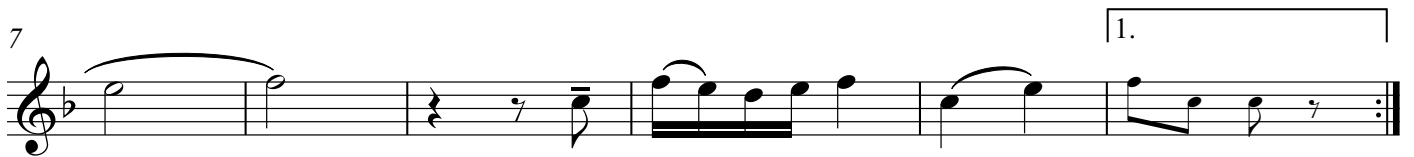
D: Karl Hoschna

(1877 - 1911)

Bearb: Josef Wimmer



A 2.x



D. S.
con rep
ad lib.

Bariton/ Posaune in C (Klarinettenmusik)

Liebestanz - Komm in meine Liebeslaube

(Münchner Polka, Boarischer)

A, B, C: Volksgut
D: Karl Hoschna
(1877 - 1911)

Bearb: Josef Wimmer



4
A 2.x

7
1.

13
2. B 2.x

18
1. 2.

23 C tacet spielen

29 D 2.x

36

43 1. spielen 2. Fine

D. S.
con rep
ad lib.

Horn in F (Tanzmusik)

Liebestanz - Komm in meine Liebeslaube

(Münchner Polka, Boarischer)

A, B, C: Volksgut

D: Karl Hoschna

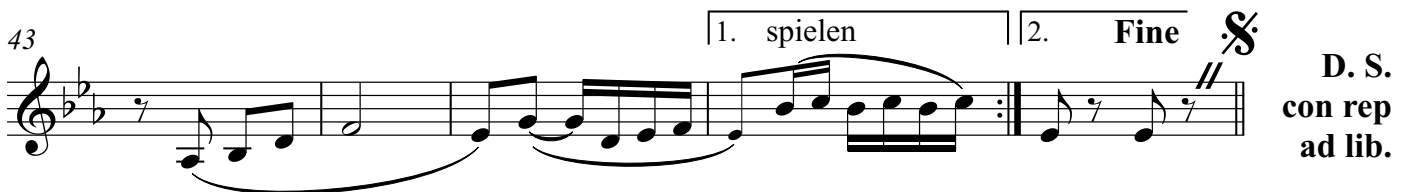
(1877 - 1911)

Bearb: Josef Wimmer



A

2.x



D. S.
con rep
ad lib.

Horn in Es (Tanzmusik)

Liebestanz - Komm in meine Liebeslaube

(Münchner Polka, Boarischer)

A, B, C: Volksgut

D: Karl Hoschna

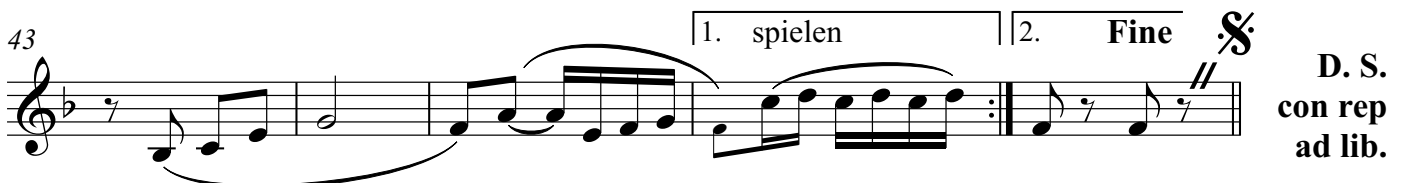
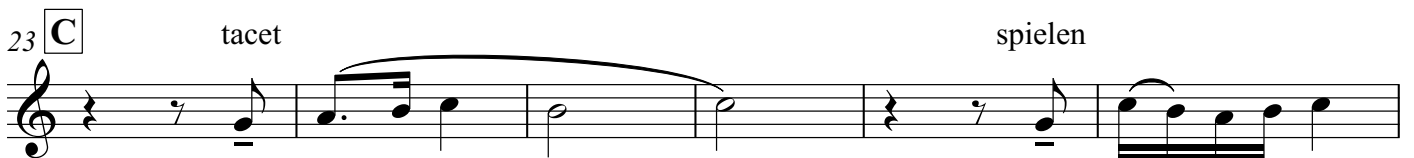
(1877 - 1911)

Bearb: Josef Wimmer



A

2.x



D. S.
con rep
ad lib.

Begleitung in C

Liebestanz - Komm in meine Liebeslaube

(Münchner Polka, Boarischer)

A, B, C: Volksgut
D: Karl Hoschna
(1877 - 1911)

Bearb: Josef Wimmer



Chord progression: Eb Bb7 Eb **A** Eb Ab

Chord progression: Bb7 Eb Ab Eb Bb7 1. Eb

Chord progression: 2. Eb **B** F7 Bb F7 Bb

Chord progression: F7 Bb F7 1. Bb 2. Bb

Chord progression: **C** Eb Ab Bb7 Eb Ab Eb Bb7

Chord progression: Eb **D** Ab Eb7

Chord progression: Ab Ab7 Db Ab

Chord progression: Eb7 Ab 1. Eb+ 2. Fine

**D. S.
con rep
ad lib.**

Tuba in C/ Kontrabass

Liebestanz - Komm in meine Liebeslaube

(Münchner Polka, Boarischer)

A, B, C: Volksgut

D: Karl Hoschna

(1877 - 1911)

Bearb: Josef Wimmer



A



7



13



18



23



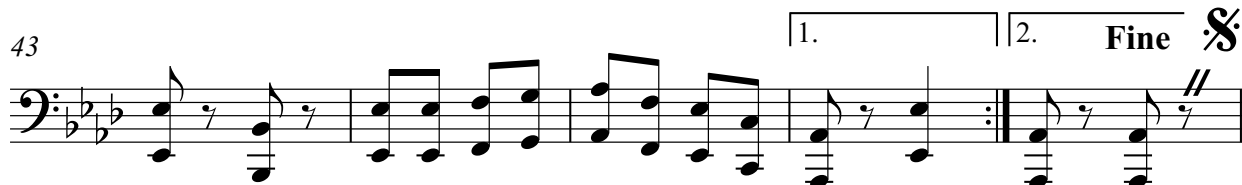
29



36



43



D. S.
con rep
ad lib.

Bass in Es

Liebstanz - Komm in meine Liebeslaube

(Münchner Polka, Boarischer)

A, B, C: Volksgut

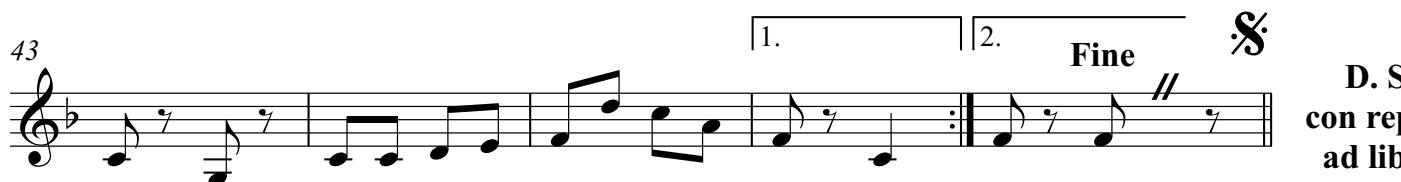
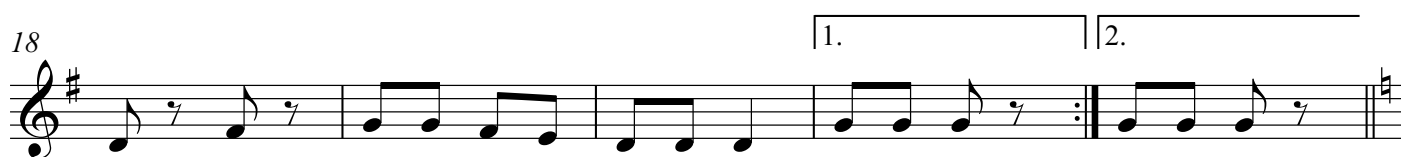
D: Karl Hoschna

(1877 - 1911)

Bearb: Josef Wimmer



A



D. S.
con rep
ad lib.

Tuba in B

Liebestanz - Komm in meine Liebeslaube

(Münchner Polka, Boarischer)

A, B, C: Volksgut

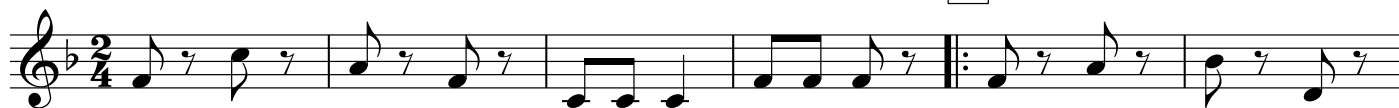
D: Karl Hoschna

(1877 - 1911)

Bearb: Josef Wimmer



A



D. S.
con rep
ad lib.

Liebstanz - Komm in meine Liebeslaube

(Münchner Polka, Boarischer) 

A, B, C: Volksgut

D: Karl Hoschna

(1877 - 1911)

Bearb: Josef Wimmer

1 Eb Bb7 Eb **A** Eb Ab

7 Bb7 Eb Ab Eb Bb7 1. Eb

13 2. Eb **B** F7 Bb F7 Bb

18 F7 Bb F7 1. Bb 2. Bb

23 **C** Eb Ab Bb7 Eb Ab

29 Eb Bb7 Eb **D** Ab Eb7

36 Ab Ab7 Db Ab

43 Eb7 Ab 1. Eb+ 2. Fine  D. S. con rep ad lib.