

# Pastorale 1 - Saxofonquartett– Stimmenverteilung:

Quartett: Es muss je eine Stimme von A bis D besetzt sein.

Quelle	Pastorale aus Vilsbiburg (Karl Fromberger, geb. 1.2.1879, gest. 23.3.1937)  Nr. 2 in den Marschbüchern des Karl Fromberger
	Partitur
A:	Sopransaxofon, Altsaxofon
B:	Altsaxofon
C:	Tenorsaxofon
D:	Bartionsaxofon

Hinweis:

2017 wird diese Pastorale mit vielen anderen Musikstücken auch für „Kleine Blasmusik“ erscheinen. Das Notenbuch erhält man über den Brauchtumpfleger des Landkreises Landshut Toni Meier.

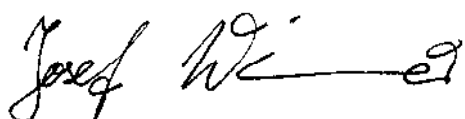
Adresse:

Toni Meier

Wolfsteinerau 8A

84036 Landshut -Auloh

Email: [toni.meier@t-online.de](mailto:toni.meier@t-online.de)



Josef Wimmer, Büchlberg

# Pastorale 1

Musik: Karl Fromberger  
(1879-1939)  
Bearb. Josef Wimmer

**A**

A) Sopransaxophon  
B) Altsaxophon  
C) Tenorsaxophon  
D) Baritonsaxophon

Measures 1-4 of section A. The score is in 4/4 time and B-flat major. Dynamics are *f*, *p*, and *ff*. The saxophones play a melodic line with some rests and slurs.

**B**

7  
Sop. Sax.  
Asax.  
Ten. Sax.  
Bar. Sax.

Measures 7-10 of section B. The score is in 4/4 time and B-flat major. Dynamics are *mf*. The saxophones play a melodic line with some rests and slurs.

13

Sop. Sax. *f* *ff*

Asax. *f* *ff*

Ten. Sax. *f* *ff*

Bar. Sax. *f* *ff*

17 **C**

Sop. Sax. *p*

Asax. *p*

Ten. Sax. *p*

Bar. Sax. *p*

21

Sop. Sax.

Asax.

Ten. Sax.

Bar. Sax.

# Pastorale 1

Musik: Karl Fromberger  
(1879-1939)  
Bearb. Josef Wimmer

## A) Sopransaxophon in B

**A**

*f* *p*

5

*ff*

9 **B**

*mf*

13

*f* *ff*

17 **C**

*p*

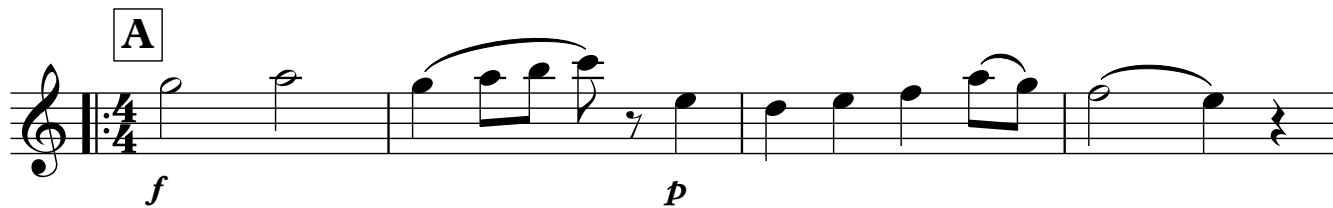
21

# Pastorale 1

A) Altsaxophon in Es

Musik: Karl Fromberger  
(1879-1939)  
Bearb. Josef Wimmer

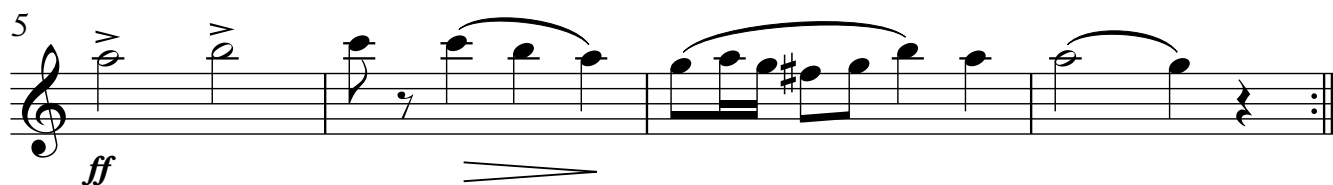
5 **A**



*f* *p*

Measure 5: Treble clef, 4/4 time signature. Starts with a half note G4, followed by a quarter note G4, then a quarter rest. The next two measures contain eighth notes with slurs: G4-A4-B4, G4-A4-B4, and G4-A4-B4. The final measure has a half note G4.

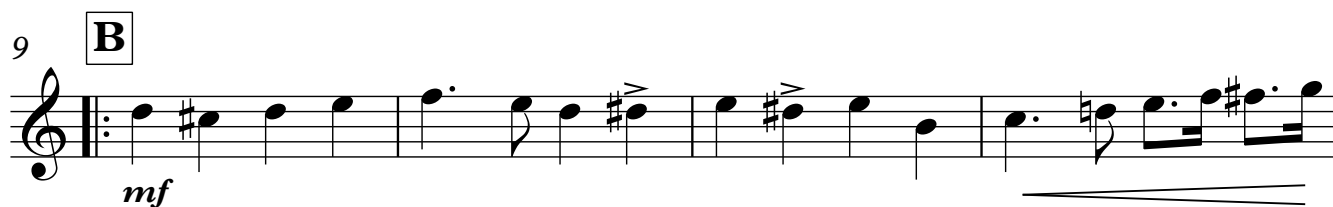
5 *ff*



*ff*

Measure 5: Treble clef, 4/4 time signature. Starts with a half note G4, followed by a quarter note G4, then a quarter rest. The next two measures contain eighth notes with slurs: G4-A4-B4, G4-A4-B4, and G4-A4-B4. The final measure has a half note G4.

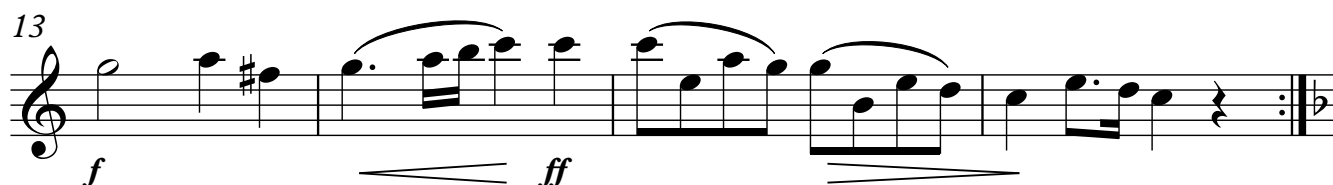
9 **B**



*mf*

Measure 9: Treble clef, 4/4 time signature. Starts with a half note G4, followed by a quarter note G4, then a quarter rest. The next two measures contain eighth notes with slurs: G4-A4-B4, G4-A4-B4, and G4-A4-B4. The final measure has a half note G4.

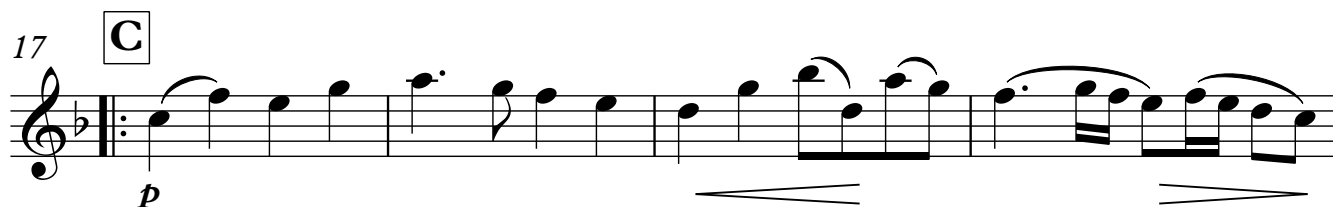
13 *f* *ff*



*f* *ff*

Measure 13: Treble clef, 4/4 time signature. Starts with a half note G4, followed by a quarter note G4, then a quarter rest. The next two measures contain eighth notes with slurs: G4-A4-B4, G4-A4-B4, and G4-A4-B4. The final measure has a half note G4.

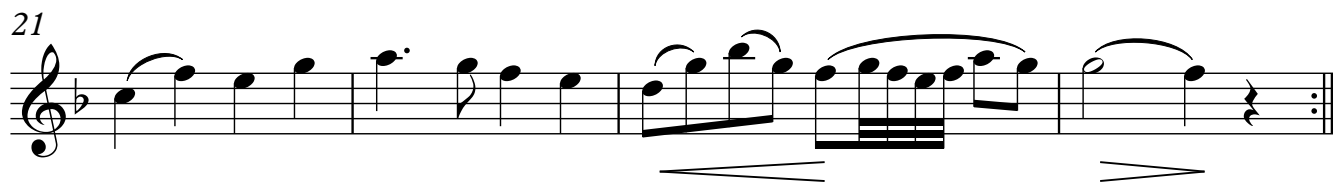
17 **C** *p*



*p*

Measure 17: Treble clef, 4/4 time signature. Starts with a half note G4, followed by a quarter note G4, then a quarter rest. The next two measures contain eighth notes with slurs: G4-A4-B4, G4-A4-B4, and G4-A4-B4. The final measure has a half note G4.

21



Measure 21: Treble clef, 4/4 time signature. Starts with a half note G4, followed by a quarter note G4, then a quarter rest. The next two measures contain eighth notes with slurs: G4-A4-B4, G4-A4-B4, and G4-A4-B4. The final measure has a half note G4.

# Pastorale 1

B) Altsaxophon in Es

Musik: Karl Fromberger  
(1879-1939)

Bearb. Josef Wimmer

**A**

*f* *p*

5

*ff*

9 **B**

*mf*

13

*f* *ff*

17 **C**

*p*

21

# Pastorale 1

Musik: Karl Fromberger

(1879-1939)

Bearb. Josef Wimmer

C) Tenorsaxophon in B

**A**

*f* *p*

5

*ff*

9 **B**

*mf*

13

*f* *ff*

17 **C**

*p*

21

# Pastorale 1

Musik: Karl Fromberger

(1879-1939)

Bearb. Josef Wimmer

D) Baritonsaxophon in Es

**A**

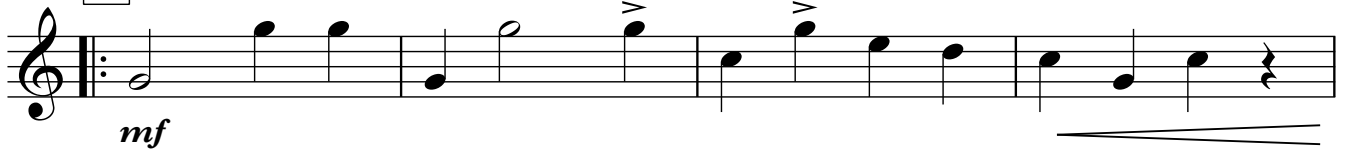


5



9

**B**



13



17

**C**



21

