

<b>Titel:</b>	<b>Ländler in B-Dur von Sperl</b>
<b>Quelle:</b>	Ländlerheft von Sperl aus Untergriesbach (Nr. 3, Nr. 15, Nr. 16), Dommelstadt: 1. Ländler- Partie Nr. 4 von Heinrich Sperl
<b>Komponist:</b>	<b>Volksgut</b>
<b>Arrangeur/ Bearbeiter:</b>	<b>Josef Wimmer</b>
<b>Besetzung:</b>	<b>Tanzmusik</b>
<b>Hinweis:</b>	Auf Vortrags-, Dynamik- und Phrasierungszeichen wurde weitgehend verzichtet. Es bleibt den Kapellen überlassen, diese nach eigenem Dafürhalten einzutragen. In der Melodieführung sollten sich Holz und Blech abwechseln. Die Nebenstimme sollte nicht durchgehend gespielt werden. Ich habe nach jedem Ländler ein anderes Zwischenspiel geschrieben, es kann auch nur immer das gleiche verwendet werden.

	Direktion		1. Horn in Es		Schlagzeug
	Piccolo		2. Horn in Es		große Trommel
	Flöte in C		3. Horn in Es		kleine Trommel
	2. Flöte in C		4. Horn in Es		Pauken
	1. Oboe		1. Horn in F		Lyra
	2. Oboe		2. Horn in F		Glockenspiel
	1. Fagott		3. Horn in F		Xylophon
	2. Fagott		4. Horn in F	<b>X</b>	Akkordeon
	Kontrafagott		1. Tenorhorn in B		Bandoneon
	Klarinette in Es		2. Tenorhorn in B (Mel.)		Harmonium
	2. Klarinette in Es		2. Tenorhorn in B		Klavier
	Klarinette hoch in B= Es- Klarinette ad lib		3. Tenorhorn in B		1. Nachschlaggeige
<b>X</b>	Klarinette in B = 2. St		4. Tenorhorn in B		2. Nachschlaggeige
	2. Klarinette in B = 3. St.	<b>X</b>	Tenorhorn (Tanzmusi)		Nachschlagbratsche
	3. Klarinette in B (oktav.)		Bariton in C		1. Violine (obligat)
	Sopransaxophon		Bariton in B		1. Violine
	1. Altsaxophon in Es	<b>X</b>	Bariton (Tanzmusi)		2. Violine
	2. Altsaxophon in Es		Bariton in C (Melodie)		3. Violine
	1. Tenorsaxophon in B		Bariton in B (Melodie)		Bratsche
	2. Tenorsaxophon in B		1. Posaune in C		Cello
	Baritonsaxophon in Es		2. Posaune in C	<b>X</b>	Kontrabass
<b>X</b>	1. Flügelhorn = 1. Trpt		3. Posaune in C		1. Stimme
<b>X</b>	2. Flügelhorn = 2. Trpt		4. Posaune in C		2. Stimme
	3. Flügelhorn in B		1. Basstrompete in B		3. Stimme
	Flügelhorn in		2. Basstrompete in B		4. Stimme
	Flügelhorn in		1. Basstrompete in C		Nebenstimme
<b>X</b>	1. Trompete in B = 1. Flü		2. Basstrompete in C		Gitarre
<b>X</b>	2. Trompete in B = 2. Flü		1. Tuba in C		Sopranino
	3. Trompete in B = 3. St.	<b>X</b>	Tuba in C		Sopranblockflöte
	4. Trompete in B		1. Tuba in B		Altblockflöte
	Begleittrumpeten in B		2. Tuba in B		Tenorblockflöte
	Begleittrumpete in B	<b>X</b>	Tuba in B		Bassblockflöte
	Trompete in		Tuba in Es		Liedblatt
	1. Trompete in Es				

Klarinette in B

# Ländler von Sperl in B-Dur

Volksgut  
Bearb. Josef Wimmer

Musical notation for the beginning of the piece, 3/4 time signature, B major key.

**A**

Musical notation for section A, second staff with first and second endings.

**AA**

Musical notation for section AA, second staff with first and second endings.

**B**

Musical notation for section B, second staff with first and second endings.

**BB**

Musical notation for section BB, second staff with first and second endings.

**C**

2.x

tr

1. 2.

**CC**

1. 2.

**D**

Solo

1. 2.

**DD**

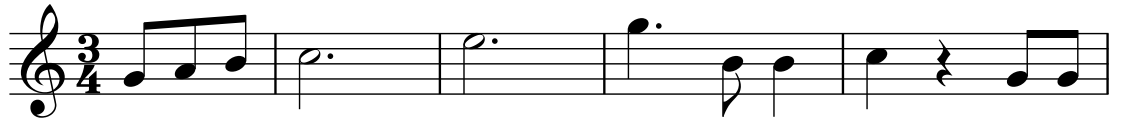
1. 2.

# Ländler von Sperl in B-Dur

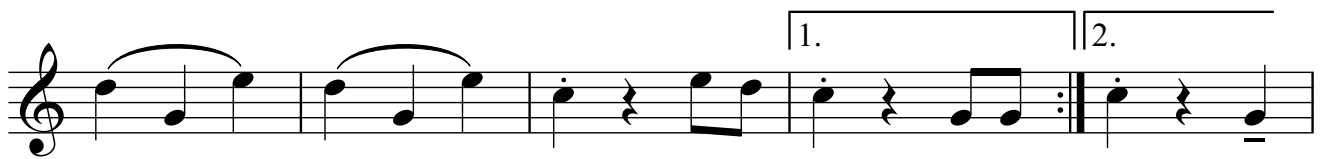
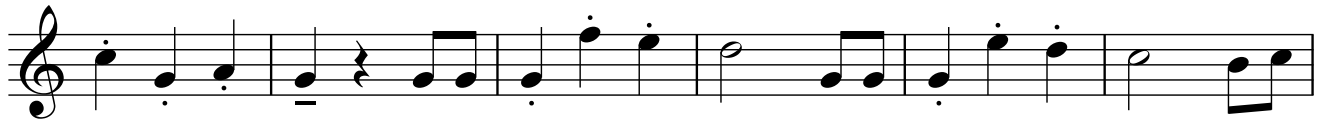
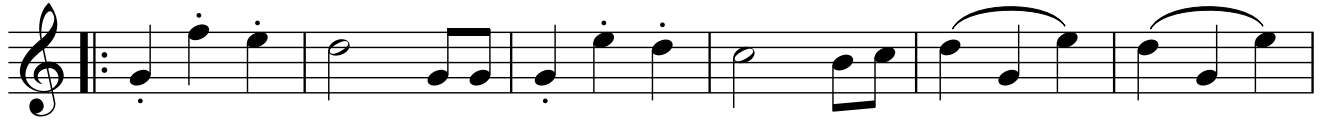
Volksgut

Flügelhorn / Trompete 1 in B

Bearb. Josef Wimmer



**A**



**AA**



**B**



**BB**



2. x

**C**

**CC**

Klar-Solo, spielen, falls keine Klar besetzt ist

**D**

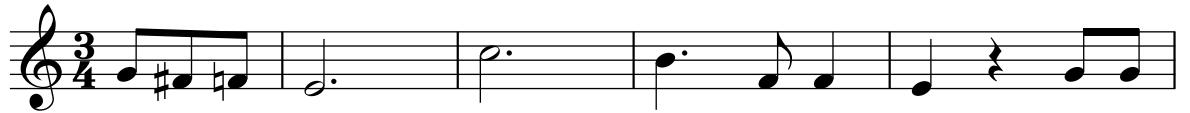
**DD**

# Ländler von Sperl in B-Dur

Volksgut

Bearb. Josef Wimmer

Flügelhorn / Trompete 2 in B



5



13



22



26



31



39



48



52



57 2. x

**C**

65

**CC** 74

78

**D** 83

88

94

**DD** 100

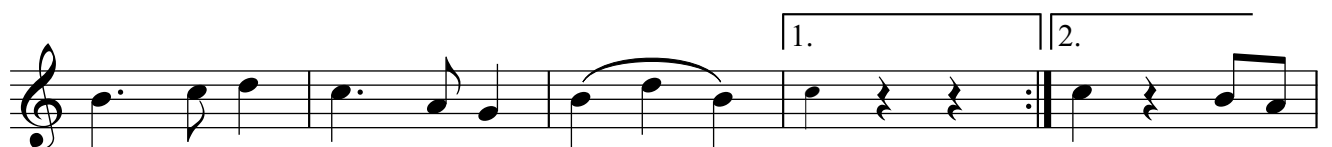
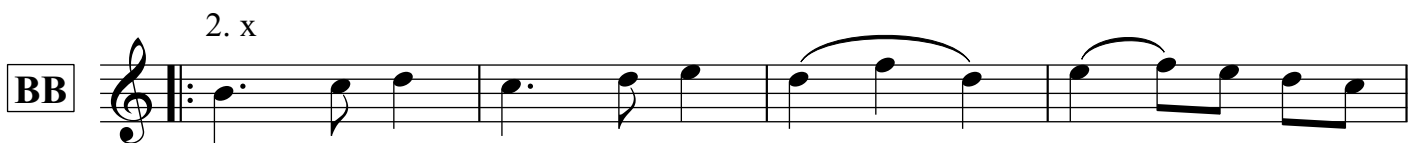
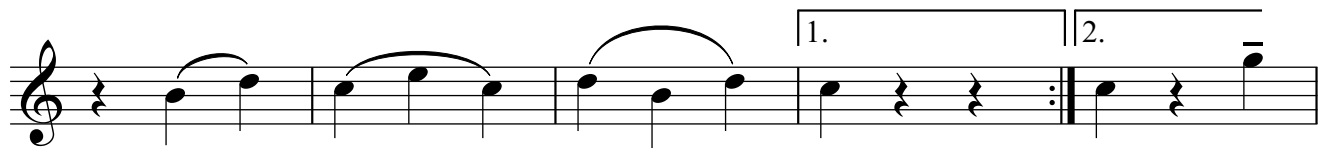
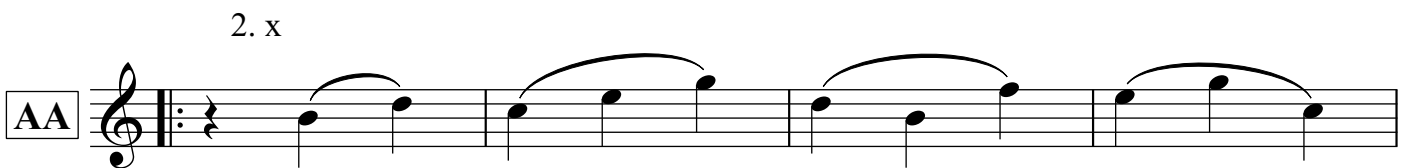
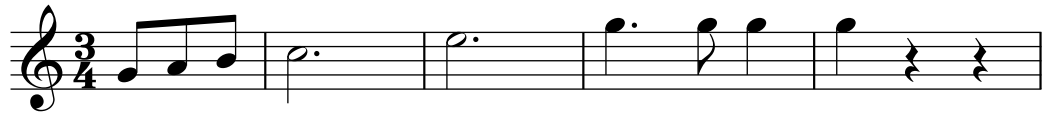
104

# Landler von Sperl in B-Dur

Volksgut

Tenorhorn in B

Bearb. Josef Wimmer





**C**

2. x

**CC**

2. x

**D**

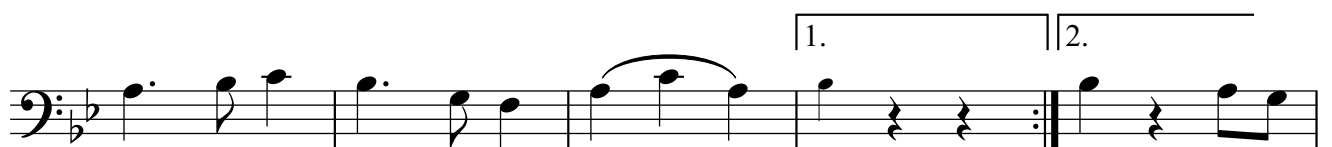
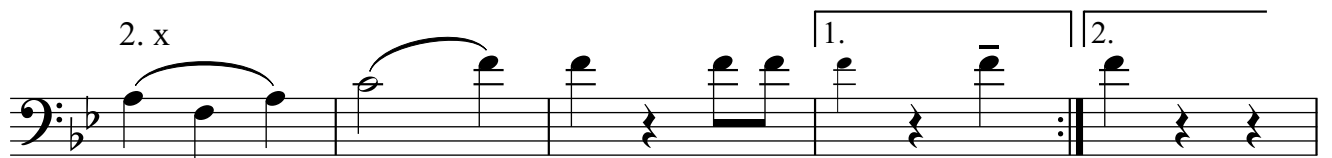
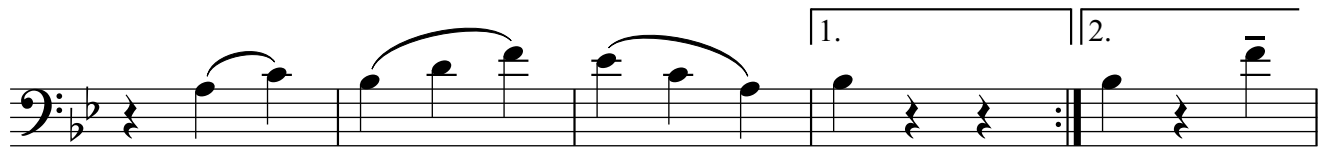
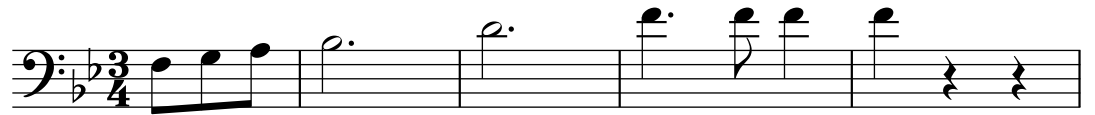
2. x

**DD**

# Landler von Sperl in B-Dur

Bariton in C

Volksgut  
Bearb. Josef Wimmer



1. x / 2. x

**C**

2. x

**CC**

2. x

**D**

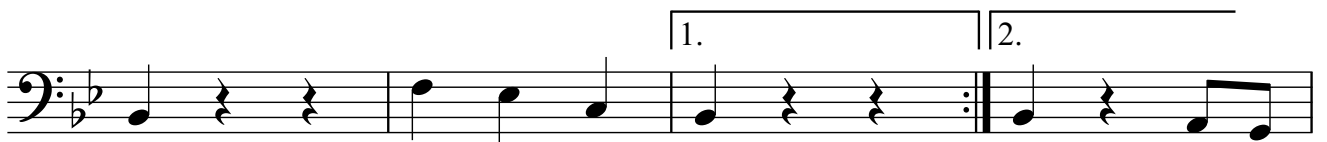
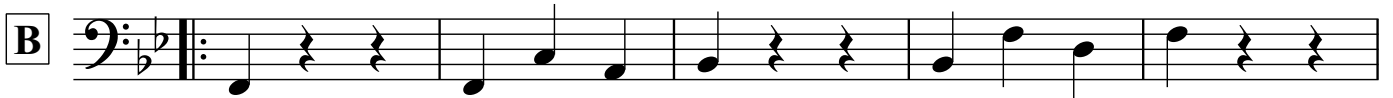
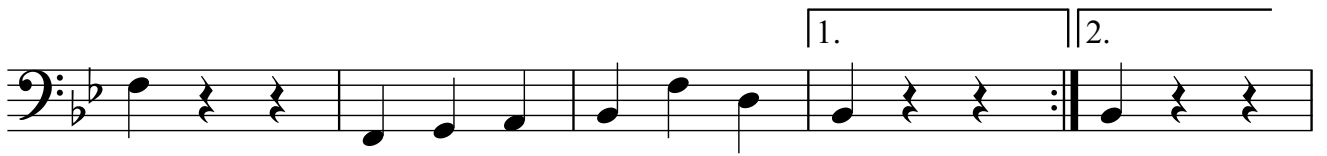
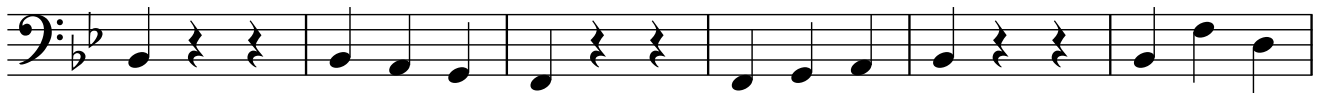
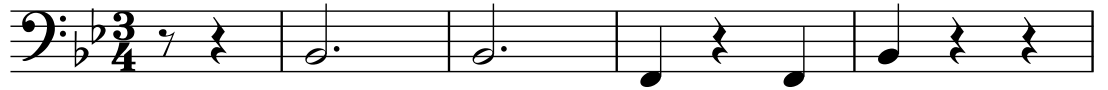
2. x

**DD**

Kontrabass

# Landler von Sperl in B-Dur

Volksgut  
Bearb. Josef Wimmer



**C**

1. 2.

**CC**

1. 2.

**D**

1. 2.

**DD**

1. 2.

# Landler von Sperl in B-Dur

Volksgut

Tuba in C

Bearb. Josef Wimmer

Musical notation for the first line of the piece, featuring a bass clef, a key signature of two flats (B-flat and E-flat), and a 3/4 time signature. The melody begins with a quarter rest, followed by a dotted half note, and continues with a series of quarter notes and rests.

**A**

Musical notation for the first system of section A, starting with a repeat sign. The melody consists of quarter notes and rests.

Musical notation for the second system of section A, continuing the melody with quarter notes and rests.

1. | 2.

Musical notation for the third system of section A, ending with a double bar line and repeat dots. The first ending is marked with '1.' and the second with '2.'

**AA**

Musical notation for the first system of section AA, starting with a repeat sign. The melody consists of quarter notes and rests.

1. | 2.

Musical notation for the second system of section AA, ending with a double bar line and repeat dots. The first ending is marked with '1.' and the second with '2.'

**B**

Musical notation for the first system of section B, starting with a repeat sign. The melody consists of quarter notes and rests.

Musical notation for the second system of section B, continuing the melody with quarter notes and rests.

1. | 2.

Musical notation for the third system of section B, ending with a double bar line and repeat dots. The first ending is marked with '1.' and the second with '2.'

**BB**

Musical notation for the first system of section BB, starting with a repeat sign. The melody consists of quarter notes and rests.

1. | 2.

Musical notation for the second system of section BB, ending with a double bar line and repeat dots. The first ending is marked with '1.' and the second with '2.'

**C**

1. 2.

**CC**

1. 2.

**D**

1. 2.

**DD**

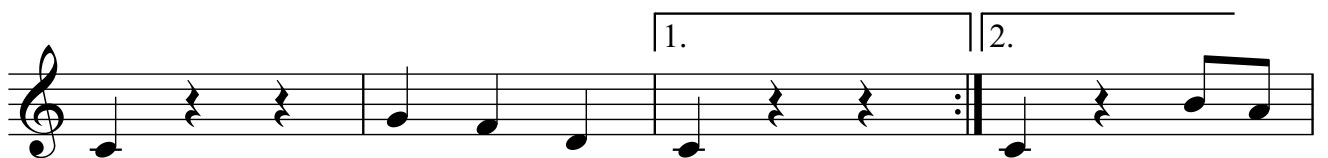
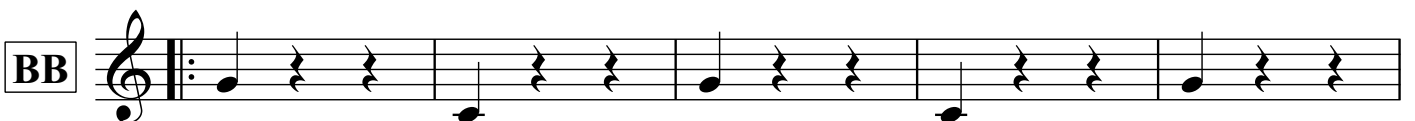
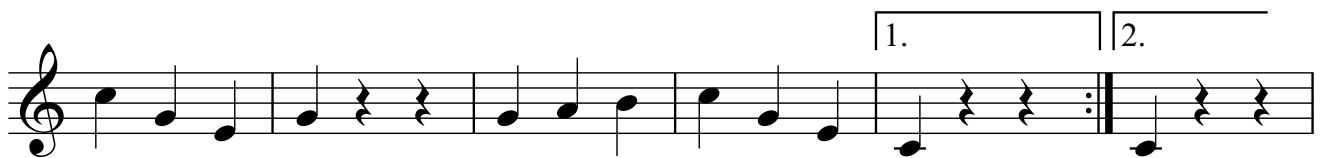
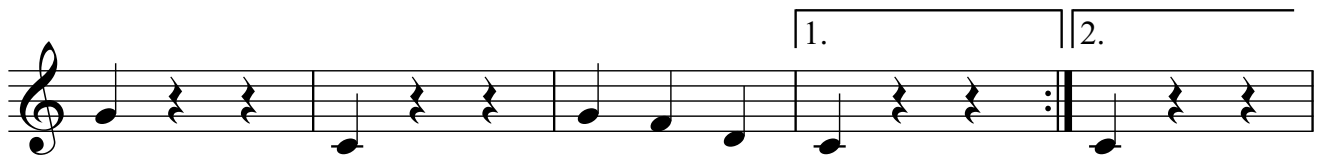
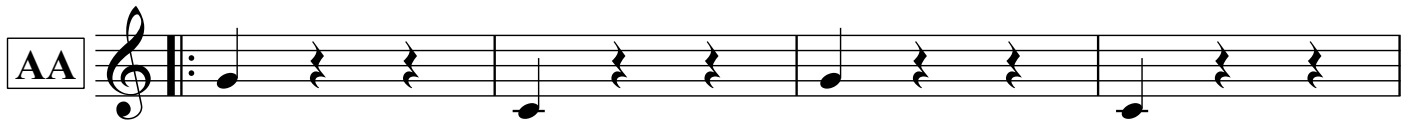
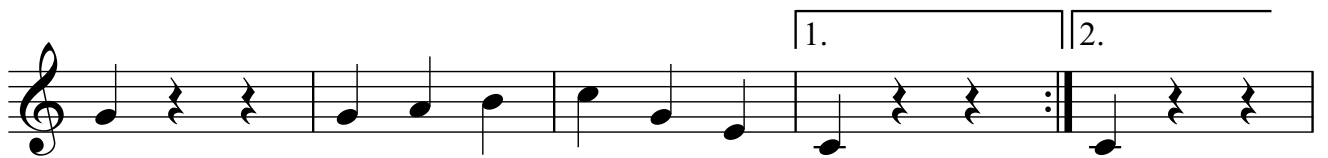
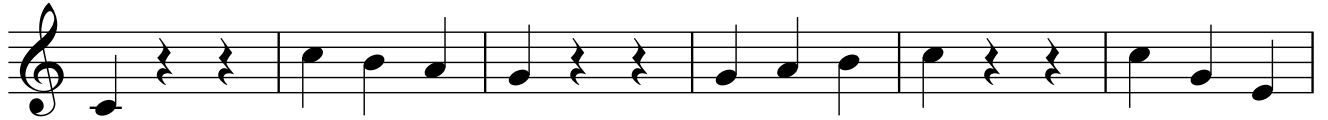
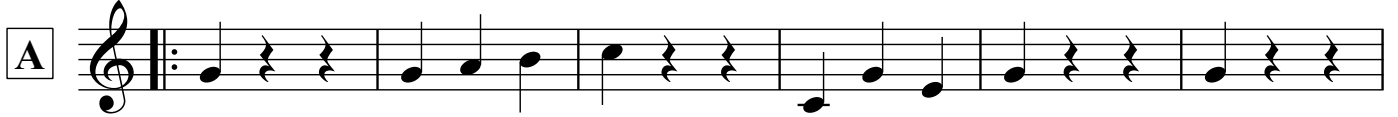
1. 2.

# Landler von Sperl in B-Dur

Volksgut

Bearb. Josef Wimmer

Bass in B





**C**

**CC**

**D**

**DD**

# Landler von Sperl in B-Dur

Musical staff with treble clef, 3/4 time signature, and key signature of two flats. Chords B $\flat$ , F7, and B $\flat$  are indicated above the staff.

**A**

Musical staff with treble clef, 3/4 time signature, and key signature of two flats. Chords F7, B $\flat$ , F7, and B $\flat$  are indicated above the staff.

Musical staff with treble clef, 3/4 time signature, and key signature of two flats. Chords F7, B $\flat$ , F7, and B $\flat$  are indicated above the staff. First and second endings are marked.

**AA**

Musical staff with treble clef, 3/4 time signature, and key signature of two flats. Chords F7, B $\flat$ , F7, and B $\flat$  are indicated above the staff.

Musical staff with treble clef, 3/4 time signature, and key signature of two flats. Chords F7, B $\flat$ , F7, and B $\flat$  are indicated above the staff. First and second endings are marked.

**B**

Musical staff with treble clef, 3/4 time signature, and key signature of two flats. Chords F7, B $\flat$ , and F7 are indicated above the staff.

Musical staff with treble clef, 3/4 time signature, and key signature of two flats. Chords B $\flat$ , F7, and B $\flat$  are indicated above the staff.

Musical staff with treble clef, 3/4 time signature, and key signature of two flats. Chords F7, B $\flat$ , and B $\flat$  are indicated above the staff. First and second endings are marked.

**BB**

Musical staff with treble clef, 3/4 time signature, and key signature of two flats. Chords F7, B $\flat$ , F7, and B $\flat$  are indicated above the staff.

Musical staff with treble clef, 3/4 time signature, and key signature of two flats. Chords F7, B $\flat$ , F7, and B $\flat$  are indicated above the staff. First and second endings are marked.

**C**

B $\flat$  F $^7$  E $\flat$  B $\flat$  F $^7$  B $\flat$

B $\flat$  F $^7$  B $\flat$  1. 2.

**CC**

F $^7$  B $\flat$  F $^7$  B $\flat$

F $^7$  B $\flat$  F $^7$  1. 2.

**D**

E $\flat$  B $\flat$  F $^7$

B $\flat$  E $\flat$  B $\flat$

F $^7$  B $\flat$  1. 2.

**DD**

F $^7$  B $\flat$  F $^7$  B $\flat$

F $^7$  B $\flat$  F $^7$  1. 2. F $^7$  B $\flat$