

Titel:	Deife, du dürrer oder Oanzige Hendl oder Geh nur weng zura
Quelle:	Handschriften in Niederbayern, hier Notenheft für Es-Klarinette aus Kellberg, dort Seite 48
Komponist:	Volksgut
Arrangeur/ Bearbeiter:	Josef Wimmer
Besetzung:	Tanzmusi

	Direktion		1. Horn in Es		Pauken
	Piccolo in C		2. Horn in Es		kleine Trommel
	Flöte in C		3. Horn in Es		große Trommel
	2. Flöte in C		4. Horn in Es		Schlagzeug
	1. Oboe		1. Horn in F		Lyra
	2. Oboe		2. Horn in F		Glockenspiel
	1. Fagott		3. Horn in F		Xylophon
	2. Fagott		4. Horn in F	X	Akkordeon
	Kontrafagott	X	Tenorhorn/Posaune in B		Bandoneon
	Klarinette in Es		2. Tenorhorn in B (Mel.)		Harmonium
	Klarinette hoch in B		2. Tenorhorn in B		
X	Klarinette in B		3. Tenorhorn in B		1. Nachschlaggeige
	2. Klarinette in B		4. Tenorhorn in B		2. Nachschlaggeige
	3. Klarinette in B		Tenorhorn ad lib		Nachschlagbratsche
	Bassklarinetten	X	Bariton/Posaune in C		1. Violine (obligat)
	Sopransaxophon		Bariton in B		1. Violine
	1. Altsaxophon in Es		Bariton (Tanzmusi)		2. Violine
	2. Altsaxophon in Es		Bariton in C (Melodie)		3. Violine
	1. Tenorsaxophon in B		Bariton in B (Melodie)		Bratsche
	2. Tenorsaxophon in B		1. Basstrompete in B		Cello
	Baritonsaxophon in Es		2. Basstrompete in B	X	Kontrabass
	Harfe		1. Basstrompete in C		1. Stimme
	Klavier		2. Basstrompete in C		2. Stimme
X	1. Flügelhorn/Trompete in B		1. Posaune in C		3. Stimme
X	2. Flügelhorn/Trompete in B		2. Posaune in C		4. Stimme
	3. Flügelhorn in B		3. Posaune in C		Nebenstimme
	Flügelhorn in		4. Posaune in C		Gitarre
	Flügelhorn in		1. Posaune in B		Sopranino
	Trompete in B		2. Posaune in B		Sopranblockflöte
	2. Trompete in B		3. Posaune in B		Altblockflöte
	3. Trompete in B		4. Posaune in B		Tenorblockflöte
	4. Trompete in B	X	1. Tuba in C		Bassblockflöte
	1. Begleittrompete in B	X	2. Tuba in C		
	2. Begleittrompete in B		1. Tuba in B		Textblatt
	1. Trompete in		2. Tuba in B		Liedblatt
	2. Trompete in	X	Tuba in B		
	1. Trompete in Es		Tuba in F	X	Begleitung in C
	2. Trompete in Es		Tuba in Es		
	3. Trompete in Es				
	4. Trompete in Es				

Deife, du dürrer

Volksgut
Bearbeitung Josef Wimmer

A



7



13



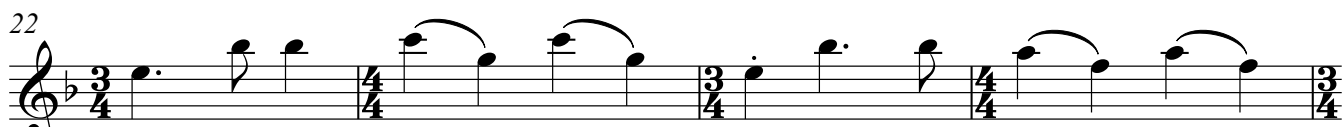
18

B



Dei - fe du dü - rer, dü - rer, geh a weng via - ra, via - ra,

22



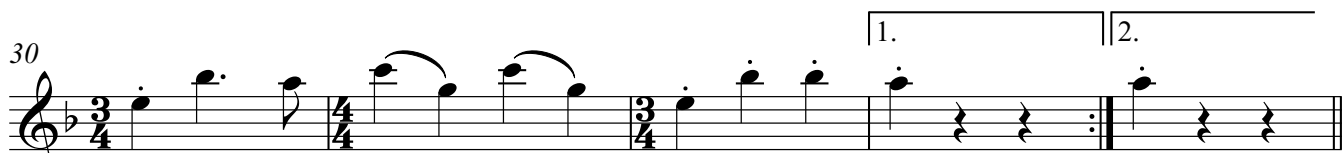
geh a weng zua - ra, zua - ra, zua - ra zu mia - ra, mia - ra.

26



Dei - fe du dü - rer, dü - rer, geh a weng via - ra, via - ra,

30



geh a weng zua - ra, zua - ra, zua - ra zu mia. mia.

D.C. con rep

Deife, du dürrer

Volksgut
Bearbeitung Josef Wimmer

A



7

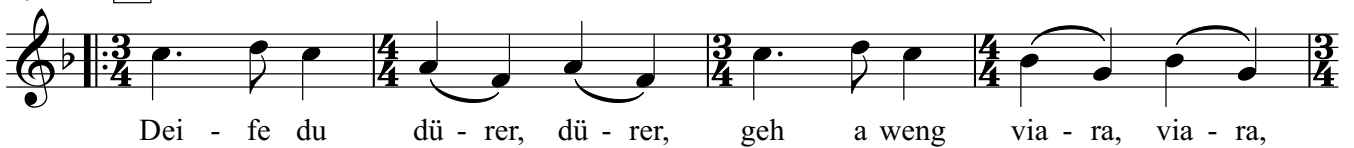


13



18

B



22



26



30



D.C. con rep

Deife, du dürrer

A



B



Dei - fe du dü - rer, dü - rer, geh a weng via - ra, via - ra,



geh a weng zua - ra, zua - ra, zua - ra zu mia - ra, mia - ra.



Dei - fe du dü - rer, dü - rer, geh a weng via - ra, via - ra,



geh a weng zua - ra, zua - ra, zua - ra zu mia. mia.

D.C. con rep

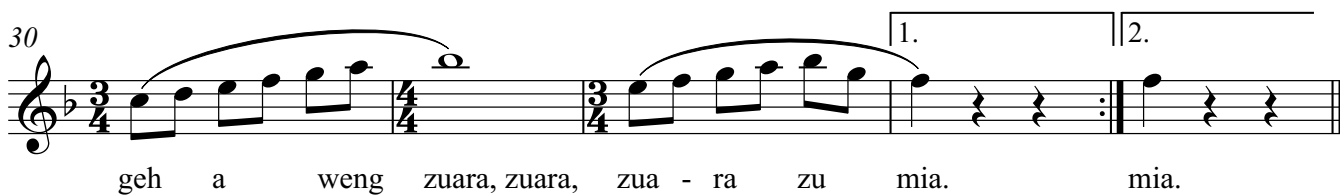
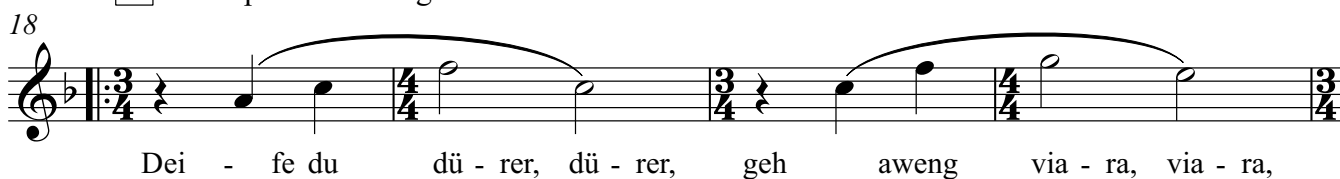
Deife, du dürrer

Volksgut
Bearbeitung Josef Wimmer

A 1.x



B 1.x spielen/2.x singen



D.C. con rep

Deife, du dürrer

Volksgut
Bearbeitung Josef Wimmer

A 1.x

7

13

B 1.x spielen/2.x singen

18

Dei - fe du dü - rer, dü - rer, geh aweng via - ra, via - ra,

22

geh aweng zua - ra, zua - ra, zua - ra zu mia - ra, mia - ra.

26

Dei - fe du dü-rer, dü-rer, geh a weng via-ra, via-ra,

30

geh a weng uara, zuara, zua - ra zu mia. mia.

D.C. con rep

Deife, du dürrer

Volksgut

Bearbeitung Josef Wimmer

A B \flat F 7

7 B \flat F 7

1. 2.

13

B E \flat B 7

22 E \flat

26 B \flat 7

1. 2.
E \flat E \flat

30

D.C. con rep

Deife, du dürrer

Volksgut
Bearbeitung Josef Wimmer

A B \flat F 7

Measures 1-6: Bass clef, key signature of two flats (B \flat , E \flat). Measure 1: 3/4 time, quarter note G \flat , quarter rest, quarter rest. Measure 2: 4/4 time, quarter note G \flat , quarter rest, quarter note B \flat , quarter rest. Measure 3: 3/4 time, quarter note G \flat , quarter note A \flat , quarter note B \flat . Measure 4: 4/4 time, quarter note G \flat , quarter rest, quarter note B \flat , quarter rest. Measure 5: 3/4 time, quarter note G \flat , quarter rest, quarter rest. Measure 6: 4/4 time, quarter note G \flat , quarter rest, quarter note B \flat , quarter rest.

7 B \flat F 7

Measures 7-12: Bass clef, key signature of two flats. Measure 7: 3/4 time, quarter note G \flat , quarter note A \flat , quarter note B \flat . Measure 8: 4/4 time, quarter note G \flat , quarter rest, quarter note B \flat , quarter rest. Measure 9: 3/4 time, quarter note G \flat , quarter rest, quarter rest. Measure 10: 4/4 time, quarter note G \flat , quarter rest, quarter note B \flat , quarter rest. Measure 11: 3/4 time, quarter note G \flat , quarter note A \flat , quarter note B \flat . Measure 12: 4/4 time, quarter note G \flat , quarter rest, quarter note B \flat , quarter rest.

13 1. B \flat 2. B \flat

Measures 13-17: Bass clef, key signature of two flats. Measure 13: 3/4 time, quarter note G \flat , quarter rest, quarter rest. Measure 14: 4/4 time, quarter note G \flat , quarter rest, quarter note B \flat , quarter rest. Measure 15: 3/4 time, quarter note G \flat , quarter note A \flat , quarter note B \flat . Measure 16: 4/4 time, quarter note G \flat , quarter note A \flat , quarter note B \flat . Measure 17: 3/4 time, quarter note G \flat , quarter note A \flat , quarter note B \flat . First ending: 3/4 time, quarter note G \flat , quarter note A \flat , quarter note B \flat . Second ending: 3/4 time, quarter note G \flat , quarter note A \flat , quarter note B \flat .

18 **B** E \flat B \flat 7

Measures 18-21: Bass clef, key signature of two flats. Measure 18: 3/4 time, quarter note G \flat , quarter rest, quarter rest. Measure 19: 4/4 time, quarter note G \flat , quarter rest, quarter note B \flat , quarter rest. Measure 20: 3/4 time, quarter note G \flat , quarter note A \flat , quarter note B \flat . Measure 21: 4/4 time, quarter note G \flat , quarter rest, quarter note B \flat , quarter rest.

22 E \flat

Measures 22-26: Bass clef, key signature of two flats. Measure 22: 3/4 time, quarter note G \flat , quarter rest, quarter rest. Measure 23: 4/4 time, quarter note G \flat , quarter rest, quarter note B \flat , quarter rest. Measure 24: 3/4 time, quarter note G \flat , quarter note A \flat , quarter note B \flat . Measure 25: 4/4 time, quarter note G \flat , quarter rest, quarter note B \flat , quarter rest. Measure 26: 3/4 time, quarter note G \flat , quarter rest, quarter rest.

27 B \flat 7

Measures 27-30: Bass clef, key signature of two flats. Measure 27: 4/4 time, quarter note G \flat , quarter rest, quarter note B \flat , quarter rest. Measure 28: 3/4 time, quarter note G \flat , quarter note A \flat , quarter note B \flat . Measure 29: 4/4 time, quarter note G \flat , quarter rest, quarter note B \flat , quarter rest. Measure 30: 3/4 time, quarter note G \flat , quarter rest, quarter rest.

31 1. E \flat 2. E \flat

Measures 31-35: Bass clef, key signature of two flats. Measure 31: 4/4 time, quarter note G \flat , quarter rest, quarter note B \flat , quarter rest. Measure 32: 3/4 time, quarter note G \flat , quarter rest, quarter rest. Measure 33: 4/4 time, quarter note G \flat , quarter rest, quarter note B \flat , quarter rest. Measure 34: 3/4 time, quarter note G \flat , quarter note A \flat , quarter note B \flat . Measure 35: 4/4 time, quarter note G \flat , quarter rest, quarter rest. First ending: 4/4 time, quarter note G \flat , quarter rest, quarter note B \flat , quarter rest. Second ending: 4/4 time, quarter note G \flat , quarter rest, quarter rest.

D.C. con rep

Deife, du dürrer

Volksgut
Bearbeitung Josef Wimmer

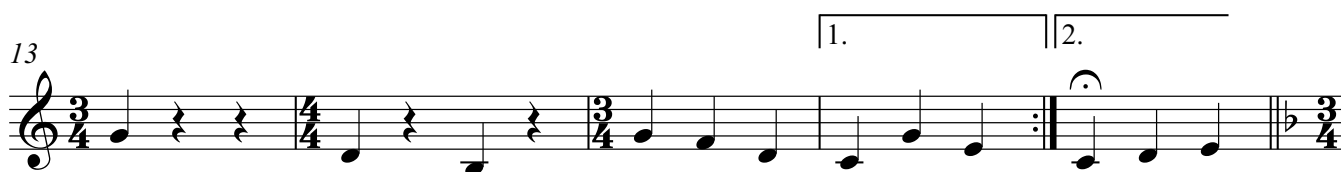
A



7

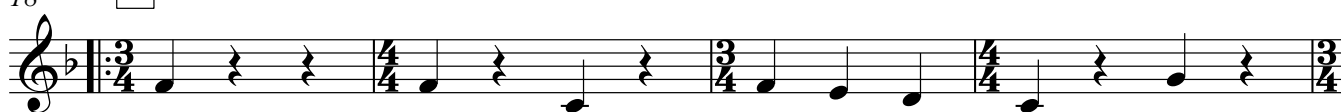


13



18

B



22



27



31



D.C. con rep

Deife, du dürrer

Volksgut
Bearbeitung Josef Wimmer

A B \flat F 7

7 B \flat F 7

13 1. B \flat 2. B \flat

18 **B** E \flat B \flat 7

Dei - fe du dü - rer, dü - rer, geh a weng via - ra, via - ra,

22 E \flat

geh a weng zua - ra, zua - ra, zua - ra zu mia - ra, mia - ra.

26 B \flat 7

Dei - fe du dü - rer, dü - rer, geh a weng via - ra, via - ra,

30 1. E \flat 2. E \flat

geh a weng zua - ra, zua - ra, zua - ra zu mia. mia.

D.C. con rep